



3,500 - 12,000 LBS. TRAILER  
**DISC BRAKES**

» MARINE

» RV

» LIVESTOCK

» UTILITY

# TABLE OF CONTENTS



## PRODUCT INFORMATION

### BOXED DISC BRAKE KITS

3,500 - 3,700 LBS. CAPACITY .....	4
6,000 LBS. CAPACITY .....	6
7,000 LBS. CAPACITY .....	8
7,200-8,000 LBS. - NARROW OVERHANG .....	11
8,000 LBS. CAPACITY .....	13
10,000-12,000 LBS. CAPACITY .....	18

### BRAKE HOSES

STANDARD FLEXIBLE HOSES .....	20
-------------------------------	----

### CALIPERS & COMPONENTS

BRAKE PADS.....	21
BOXED CALIPER KITS .....	22
MOUNTING HARDWARE .....	24

### HUBS & COMPONENTS

HUBS .....	26
HUB-ROTORS.....	28
SPACERS & HARDWARE.....	29
ROTORS .....	30

### SERVICE KITS

BEARING & SEAL KITS .....	32
XL PRO-LUBE™ OIL LUBRICATION SYSTEM.....	34
TRAILER BUDDY® BEARING PROTECTOR .....	35



[WWW.DEXTERAXLE.COM/KODIAK](http://WWW.DEXTERAXLE.COM/KODIAK)



## INTEGRAL HUB-ROTOR

**QUICKER INSTALLATION AND BETTER FITMENT**

**PART NUMBERS START WITH *K71-2H OR K71-1H***

- » Hub and rotor are machined together and balanced as one unit, providing a smoother ride and longer product life
- » Easy upgrade option from drum brakes
- » Caliper, guide bolts, studs and races are part of the hub assembly for easy installation



## TWO-PIECE HUB AND ROTOR

**CUSTOMIZABLE AND INSTALLATION VERSATILITY**

**PART NUMBERS START WITH *K71-2R OR K71-1R***

- » Caliper and rotor can be removed from the wheel end without removing the whole hub assembly for quicker service
- » Caliper guide bolts with thread locker are included
- » Not recommended for hub piloted wheels

## CORROSION PROTECTION OPTIONS

### GAL-DEX®



#### AFFORDABLE OPTION

- » 3,500 - 10,000 lbs.
- » 500 Salt Spray Hours
- » Caliper, Rotor, and Bracket
- » Good Corrosion Protection

### KODAGUARD®



#### INTERMEDIATE OPTION

- » 3,500 - 6,000 lbs.
- » 800 Salt Spray Hours
- » Available only for calipers
- » Better Corrosion Protection

### STAINLESS STEEL



#### THE GOLD STANDARD

- » 3,500 - 8,000 lbs.
- » 1,500+ Salt Spray Hours
- » Caliper, Rotor, and Bracket
- » Best Corrosion Protection

# BOXED DISC BRAKE KITS

## 3,500 - 3,700 LBS. CAPACITY



SIZE	BOLT PATTERN	STUDS	BRAKE FLANGE	WHEEL SIZE	FITS DEXTER HUBS*
10" ROTOR	5 ON 4.50"	1/2"	4 BOLT	14" AND UP	008-436-04, 008-562-03, 008-B78-05

### K71-2R-10-DDD



QTY	PART NUMBER	DESCRIPTION
2	070-RTR-10-D	GAL-DEX ROTOR
2	K71-DBC-225-D	GAL-DEX CALIPER
2	090-CMB-10-U-D	GAL-DEX BRACKET
2	K71-DBC-225-PAD	E-COAT BACKED BRAKE PADS
4	007-DBC-MHGB	CALIPER GUIDE BOLTS

### K71-2R-10-DKD



QTY	PART NUMBER	DESCRIPTION
2	070-RTR-10-D	GAL-DEX ROTOR
2	K71-DBC-225-KG	KODAGUARD CALIPER
2	090-CMB-10-U-D	GAL-DEX BRACKET
2	K71-DBC-225-PAD-SS	STAINLESS BACKED BRAKE PADS
4	007-DBC-MHGB	CALIPER GUIDE BOLTS

### K71-2R-10-DSD



QTY	PART NUMBER	DESCRIPTION
2	070-RTR-10-D	GAL-DEX ROTOR
2	K71-DBC-225-SS	STAINLESS CALIPER
2	090-CMB-10-U-D	GAL-DEX BRACKET
2	K71-DBC-225-PAD-SS	STAINLESS BACKED BRAKE PADS
4	007-DBC-MHGB	CALIPER GUIDE BOLTS

### K71-2R-10-SSS



QTY	PART NUMBER	DESCRIPTION
2	070-RTR-10-SS	STAINLESS ROTOR
2	K71-DBC-225-SS	STAINLESS CALIPER
2	090-CMB-10-U-SS	STAINLESS BRACKET
2	K71-DBC-225-PAD-SS	STAINLESS BACKED BRAKE PADS
4	007-DBC-MHGB	CALIPER GUIDE BOLTS

\*FOR MORE INFORMATION ABOUT MATCHING HUBS, SEE HUBS & COMPONENTS SECTION

# BOXED DISC BRAKE KITS

## 3,500 - 3,700 LBS. CAPACITY

SIZE	BOLT PATTERN	STUDS	BRAKE FLANGE	WHEEL SIZE	LUBRICATION
10" HUB-ROTOR	5 ON 4.50"	1/2"	4 BOLT	14" AND UP	GREASE

### K71-2H-10-DDD



QTY	PART NUMBER	DESCRIPTION
2	008-R/H-10-D-S	GAL-DEX HUB-ROTOR
2	K71-DBC-225-D	GAL-DEX CALIPER
2	090-CMB-10I-D	GAL-DEX BRACKET
2	K71-DBC-225-PAD	E-COAT BACKED BRAKE PADS
4	007-DBC-MHGB	CALIPER GUIDE BOLTS

### K71-2H-10-DKD



QTY	PART NUMBER	DESCRIPTION
2	008-R/H-10-D-S	GAL-DEX HUB-ROTOR
2	K71-DBC-225-KG	KODAGUARD CALIPER
2	090-CMB-10I-D	GAL-DEX BRACKET
2	K71-DBC-225-PAD-SS	STAINLESS BACKED BRAKE PADS
4	007-DBC-MHGB	CALIPER GUIDE BOLTS

### K71-2H-10-DSD



QTY	PART NUMBER	DESCRIPTION
2	008-R/H-10-D-S	GAL-DEX HUB-ROTOR
2	K71-DBC-225-SS	STAINLESS CALIPER
2	090-CMB-10I-D	GAL-DEX BRACKET
2	K71-DBC-225-PAD-SS	STAINLESS BACKED BRAKE PADS
4	007-DBC-MHGB	CALIPER GUIDE BOLTS

### K71-2R-10-SSSS



QTY	PART NUMBER	DESCRIPTION
2	070-RTR-10-SS	STAINLESS ROTOR
2	008-H-84545-SS-S	STAINLESS IDLER HUB
2	K71-DBC-225-SS	STAINLESS CALIPER
2	090-CMB-10-U-SS	STAINLESS BRACKET
2	K71-DBC-225-PAD-SS	STAINLESS BACKED BRAKE PADS
4	007-DBC-MHGB	CALIPER GUIDE BOLTS

# BOXED DISC BRAKE KITS

## 6,000 LBS. CAPACITY



TYPE	BOLT PATTERN	STUDS	BRAKE FLANGE	WHEEL SIZE	FITS DEXTER HUBS*
12" ROTOR	6 ON 5.50"	1/2"	5 BOLT	15" AND UP	008-445-15, 008-655-04, 008-B79-05

### K71-2R-12-DDD



QTY	PART NUMBER	DESCRIPTION
2	070-RTR-12-D	GAL-DEX ROTOR
2	K71-DBC-225-D	GAL-DEX CALIPER
2	090-CMB-12-U-D	GAL-DEX BRACKET
2	K71-DBC-225-PAD	E-COAT BACKED BRAKE PADS
4	007-DBC-MHGB	CALIPER GUIDE BOLTS

### K71-2R-12-DKD



QTY	PART NUMBER	DESCRIPTION
2	070-RTR-12-D	GAL-DEX ROTOR
2	K71-DBC-225-KG	KODAGUARD CALIPER
2	090-CMB-12-U-D	GAL-DEX BRACKET
2	K71-DBC-225-PAD-SS	STAINLESS BACKED BRAKE PADS
4	007-DBC-MHGB	CALIPER GUIDE BOLTS

### K71-2R-12-DSD



QTY	PART NUMBER	DESCRIPTION
2	070-RTR-12-D	GAL-DEX ROTOR
2	K71-DBC-225-SS	STAINLESS CALIPER
2	090-CMB-12-U-D	GAL-DEX BRACKET
2	K71-DBC-225-PAD-SS	STAINLESS BACKED BRAKE PADS
4	007-DBC-MHGB	CALIPER GUIDE BOLTS

### K71-2R-12-SSS



QTY	PART NUMBER	DESCRIPTION
2	070-RTR-12-SS	STAINLESS ROTOR
2	K71-DBC-225-SS	STAINLESS CALIPER
2	090-CMB-12-U-SS	STAINLESS BRACKET
2	K71-DBC-225-PAD-SS	STAINLESS BACKED BRAKE PADS
4	007-DBC-MHGB	CALIPER GUIDE BOLTS

\*FOR MORE INFORMATION ABOUT MATCHING HUBS, SEE HUBS & COMPONENTS SECTION

# BOXED DISC BRAKE KITS

## 6,000 LBS. CAPACITY

SIZE	BOLT PATTERN	STUDS	BRAKE FLANGE	WHEEL SIZE	LUBRICATION
12" HUB-ROTOR	6 ON 5.50"	1/2"	5 BOLT	15" AND UP	GREASE

### K71-2H-12-DDD



QTY	PART NUMBER	DESCRIPTION
2	008-R/H-12-D-S	GAL-DEX HUB-ROTOR
2	K71-DBC-225-D	GAL-DEX CALIPER
2	090-CMB-12-U-D	GAL-DEX BRACKET
2	K71-DBC-225-PAD	E-COAT BACKED BRAKE PADS
4	007-DBC-MHGB	CALIPER GUIDE BOLTS

### K71-2H-12-DKD



QTY	PART NUMBER	DESCRIPTION
2	008-R/H-12-D-S	GAL-DEX HUB-ROTOR
2	K71-DBC-225-KG	KODAGUARD CALIPER
2	090-CMB-12-U-D	GAL-DEX BRACKET
2	K71-DBC-225-PAD-SS	STAINLESS BACKED BRAKE PADS
4	007-DBC-MHGB	CALIPER GUIDE BOLTS

### K71-2H-12-DSD



QTY	PART NUMBER	DESCRIPTION
2	008-R/H-12-D-S	GAL-DEX HUB-ROTOR
2	K71-DBC-225-SS	STAINLESS CALIPER
2	090-CMB-12-U-D	GAL-DEX BRACKET
2	K71-DBC-225-PAD-SS	STAINLESS BACKED BRAKE PADS
4	007-DBC-MHGB	CALIPER GUIDE BOLTS

### K71-2R-12-SSSS



QTY	PART NUMBER	DESCRIPTION
2	070-RTR-12-SS	STAINLESS ROTOR
2	008-H-42655-SS-S	STAINLESS IDLER HUB
2	K71-DBC-225-SS	STAINLESS CALIPER
2	090-CMB-12-U-SS	STAINLESS BRACKET
2	K71-DBC-225-PAD-SS	STAINLESS BACKED BRAKE PADS
4	007-DBC-MHGB	CALIPER GUIDE BOLTS

# BOXED DISC BRAKE KITS

## 7,000 LBS. CAPACITY



TYPE	BOLT PATTERN	STUDS	BRAKE FLANGE	WHEEL SIZE	FITS DEXTER HUBS*
13.3" ROTOR	8 ON 6.50"	1/2"	5 BOLT	16" AND UP	008-444-03, 008-865-03, 008-B80-05

### K71-2R-133-7-8-DDD



QTY	PART NUMBER	DESCRIPTION
2	070-RTR-133-7-8-D	GAL-DEX ROTOR
2	K71-DBC-250-D	GAL-DEX CALIPER
2	090-CMB-133-7-D	GAL-DEX BRACKET
2	K71-DBC-250-PAD	E-COAT BACKED BRAKE PADS
4	007-DBC-MHGB	CALIPER GUIDE BOLTS

### K71-2R-133-7-8-DSD



QTY	PART NUMBER	DESCRIPTION
2	070-RTR-133-7-8-D	GAL-DEX ROTOR
2	K71-DBC-250-SS	STAINLESS CALIPER
2	090-CMB-133-7-D	GAL-DEX BRACKET
2	K71-DBC-250-PAD-SS	STAINLESS BACKED BRAKE PADS
4	007-DBC-MHGB	CALIPER GUIDE BOLTS

### K71-2R-133-7-8-SSS



QTY	PART NUMBER	DESCRIPTION
2	070-RTR-133-7-8-SS	STAINLESS ROTOR
2	K71-DBC-250-SS	STAINLESS CALIPER
2	090-CMB-133-7-SS	STAINLESS BRACKET
2	K71-DBC-250-PAD-SS	STAINLESS BACKED BRAKE PADS
4	007-DBC-MHGB	CALIPER GUIDE BOLTS

\*FOR MORE INFORMATION ABOUT MATCHING HUBS, SEE HUBS & COMPONENTS SECTION



# BOXED DISC BRAKE KITS

## 7,000 LBS. CAPACITY

SIZE	BOLT PATTERN	STUDS	BRAKE FLANGE	WHEEL SIZE
13" HUB-ROTOR	8 ON 6.50"	9/16"	5 BOLT	16" AND UP

### K71-2R-133-7-9-DDD



QTY	PART NUMBER	DESCRIPTION
2	070-RTR-133-8-9-D	GAL-DEX ROTOR
2	K71-DBC-250-D	GAL-DEX CALIPER
2	090-CMB-133-7-D	GAL-DEX BRACKET
2	K71-DBC-250-PAD	E-COAT BACKED BRAKE PADS
4	007-DBC-MHGB	CALIPER GUIDE BOLTS

### K71-2R-133-7-9-DSD



QTY	PART NUMBER	DESCRIPTION
2	070-RTR-133-8-9-D	GAL-DEX ROTOR
2	K71-DBC-250-SS	STAINLESS CALIPER
2	090-CMB-133-7-D	GAL-DEX BRACKET
2	K71-DBC-250-PAD-SS	STAINLESS BACKED BRAKE PADS
4	007-DBC-MHGB	CALIPER GUIDE BOLTS

### K71-2R-133-7-9-SSS



QTY	PART NUMBER	DESCRIPTION
2	070-RTR-133-8-9-SS	STAINLESS ROTOR
2	K71-DBC-250-SS	STAINLESS CALIPER
2	090-CMB-133-7-SS	STAINLESS BRACKET
2	K71-DBC-250-PAD-SS	STAINLESS BACKED BRAKE PADS
4	007-DBC-MHGB	CALIPER GUIDE BOLTS

# BOXED DISC BRAKE KITS

## 7,000 LBS. CAPACITY



SIZE	BOLT PATTERN	STUDS	BRAKE FLANGE	WHEEL SIZE	LUBRICATION
13" HUB-ROTOR	8 ON 6.50"	SEE BELOW	5 BOLT	16" AND UP	GREASE OR OIL

### K71-2H-133-7-8-DDD



QTY	PART NUMBER	DESCRIPTION
2	070-RTR-133-7-8-D-S	GAL-DEX HUB-ROTOR, 1/2" STUDS
2	K71-DBC-250-D	GAL-DEX CALIPER
2	090-CMB-133-7-D	GAL-DEX BRACKET
2	K71-DBC-250-PAD	E-COAT BACKED BRAKE PADS
4	007-DBC-MHGB	CALIPER GUIDE BOLTS

### K71-2H-133-7-8-DSD



QTY	PART NUMBER	DESCRIPTION
2	070-RTR-133-7-8-D-S	GAL-DEX HUB-ROTOR, 1/2" STUDS
2	K71-DBC-250-SS	STAINLESS CALIPER
2	090-CMB-133-7-D	GAL-DEX BRACKET
2	K71-DBC-250-PAD-SS	STAINLESS BACKED BRAKE PADS
4	007-DBC-MHGB	CALIPER GUIDE BOLTS

### K71-2H-133-7-9-DDD



QTY	PART NUMBER	DESCRIPTION
2	008-R/H-133-8-9-D-S	GAL-DEX HUB-ROTOR, 9/16" STUDS
2	K71-DBC-250-D	GAL-DEX CALIPER
2	090-CMB-133-71-D	GAL-DEX BRACKET
2	K71-DBC-250-PAD	E-COAT BACKED BRAKE PADS
4	007-DBC-MHGB	CALIPER GUIDE BOLTS

### K71-2H-133-7-9-DSD



QTY	PART NUMBER	DESCRIPTION
2	008-R/H-133-8-9-D-S	GAL-DEX HUB-ROTOR, 9/16" STUDS
2	K71-DBC-250-SS	STAINLESS CALIPER
2	090-CMB-133-71-D	GAL-DEX BRACKET
2	K71-DBC-250-PAD	E-COAT BACKED BRAKE PADS
4	007-DBC-MHGB	CALIPER GUIDE BOLTS

# BOXED DISC BRAKE KITS

## 7,200-8,000 LBS. - NARROW OVERHANG

SIZE	BOLT PATTERN	STUDS	BRAKE FLANGE	WHEEL SIZE	FITS DEXTER HUBS*
13" ROTOR	8 ON 6.50"	SEE BELOW	4 BOLT, DEXTER	16" AND UP	008-399-05, 008-399-06, 008-287-10, 008-287-11

### K71-2R-133-72-9-DDD



QTY	PART NUMBER	DESCRIPTION
2	070-RTR-133-8-9-D	GAL-DEX ROTOR, 9/16" STUDS
2	K71-DBC-250-D	GAL-DEX CALIPER
2	090-CMB-133-7.2D-D	GAL-DEX BRACKET
2	K71-DBC-250-PAD	E-COAT BACKED BRAKE PADS
4	007-DBC-MHGB	CALIPER GUIDE BOLTS

### K71-2R-133-72-9-DSD



QTY	PART NUMBER	DESCRIPTION
2	070-RTR-133-8-9-D	GAL-DEX ROTOR, 9/16" STUDS
2	K71-DBC-250-SS	STAINLESS CALIPER
2	090-CMB-133-7.2D-D	GAL-DEX BRACKET
2	K71-DBC-250-PAD-SS	STAINLESS BACKED BRAKE PADS
4	007-DBC-MHGB	CALIPER GUIDE BOLTS

### K71-2R-133-72-5-DDD



QTY	PART NUMBER	DESCRIPTION
2	070-RTR-133-8-5-D	GAL-DEX ROTOR, 5/8" STUDS
2	K71-DBC-250-D	GAL-DEX CALIPER
2	090-CMB-133-7.2D-D	GAL-DEX BRACKET
2	K71-DBC-250-PAD	E-COAT BACKED BRAKE PADS
4	007-DBC-MHGB	CALIPER GUIDE BOLTS

### K71-2R-133-72-5-DSD



QTY	PART NUMBER	DESCRIPTION
2	070-RTR-133-8-5-D	GAL-DEX ROTOR, 5/8" STUDS
2	K71-DBC-250-SS	STAINLESS CALIPER
2	090-CMB-133-7.2D-D	GAL-DEX BRACKET
2	K71-DBC-250-PAD-SS	STAINLESS BACKED BRAKE PADS
4	007-DBC-MHGB	CALIPER GUIDE BOLTS

\*FOR MORE INFORMATION ABOUT MATCHING HUBS, SEE HUBS & COMPONENTS SECTION

# BOXED DISC BRAKE KITS

## 7,200-8,000 LBS. - NARROW OVERHANG



SIZE	BOLT PATTERN	STUDS	BRAKE FLANGE	WHEEL SIZE	LUBRICATION
13" HUB-ROTOR	8 ON 6.50"	SEE BELOW	4 BOLT, DEXTER	16" AND UP	GREASE OR OIL

### K71-2H-133-72-9-DDD



### K71-2H-133-72-9-DSD



QTY	PART NUMBER	DESCRIPTION
2	008-R/H-133-8-9-D-S	GAL-DEX HUB-ROTOR, 9/16" STUDS
2	K71-DBC-250-D	GAL-DEX CALIPER
2	090-CMB-133-7.2D-D	GAL-DEX BRACKET
2	K71-DBC-250-PAD	E-COAT BACKED BRAKE PADS
4	007-DBC-MHGB	CALIPER GUIDE BOLTS

QTY	PART NUMBER	DESCRIPTION
2	008-R/H-133-8-9-D-S	GAL-DEX HUB-ROTOR, 9/16" STUDS
2	K71-DBC-250-SS	STAINLESS CALIPER
2	090-CMB-133-7.2D-D	GAL-DEX BRACKET
2	K71-DBC-250-PAD-SS	STAINLESS BACKED BRAKE PADS
4	007-DBC-MHGB	CALIPER GUIDE BOLTS

### K71-2H-133-72-5-DDD



### K71-2H-133-72-5-DSD



QTY	PART NUMBER	DESCRIPTION
2	008-R/H-133-8-5-D-S	GAL-DEX HUB-ROTOR, 5/8" STUDS
2	K71-DBC-250-D	GAL-DEX CALIPER
2	090-CMB-133-7.2D-D	GAL-DEX BRACKET
2	K71-DBC-250-PAD	E-COAT BACKED BRAKE PADS
4	007-DBC-MHGB	CALIPER GUIDE BOLTS

QTY	PART NUMBER	DESCRIPTION
2	008-R/H-133-8-5-D-S	GAL-DEX HUB-ROTOR, 5/8" STUDS
2	K71-DBC-250-SS	STAINLESS CALIPER
2	090-CMB-133-7.2D-D	GAL-DEX BRACKET
2	K71-DBC-250-PAD-SS	STAINLESS BACKED BRAKE PADS
4	007-DBC-MHGB	CALIPER GUIDE BOLTS

# BOXED DISC BRAKE KITS

## 8,000 LBS. CAPACITY

SIZE	BOLT PATTERN	STUDS	BRAKE FLANGE	WHEEL SIZE	FITS DEXTER HUBS*
13" ROTOR	8 ON 6.50"	9/16"	4 BOLT, DEXTER	16" AND UP	008-287-10, 008-287-11

### K71-2R-133-8D-9-DDD



QTY	PART NUMBER	DESCRIPTION
2	070-RTR-133-8-9-D	GAL-DEX ROTOR
2	K71-DBC-250-D	GAL-DEX CALIPER
2	090-CMB-133-8D-D	GAL-DEX BRACKET
2	K71-DBC-250-PAD	E-COAT BACKED BRAKE PADS
4	007-DBC-MHGB	CALIPER GUIDE BOLTS

### K71-2R-133-8D-9-DSD



QTY	PART NUMBER	DESCRIPTION
2	070-RTR-133-8-9-D	GAL-DEX ROTOR
2	K71-DBC-250-SS	STAINLESS CALIPER
2	090-CMB-133-8D-D	GAL-DEX BRACKET
2	K71-DBC-250-PAD-SS	STAINLESS BACKED BRAKE PADS
4	007-DBC-MHGB	CALIPER GUIDE BOLTS

### K71-2R-133-8D-9-SSS



QTY	PART NUMBER	DESCRIPTION
2	070-RTR-133-8-9-SS	STAINLESS ROTOR
2	K71-DBC-250-SS	STAINLESS CALIPER
2	090-CMB-133-8D-SS	STAINLESS BRACKET
2	K71-DBC-250-PAD-SS	STAINLESS BACKED BRAKE PADS
4	007-DBC-MHGB	CALIPER GUIDE BOLTS

**KITS ON THIS PAGE CANNOT BE USED WITH DEXTER 008-399 SERIES HUBS**

*\*FOR MORE INFORMATION ABOUT MATCHING HUBS, SEE HUBS & COMPONENTS SECTION*

# BOXED DISC BRAKE KITS

## 8,000 LBS. CAPACITY



SIZE	BOLT PATTERN	STUDS	BRAKE FLANGE	WHEEL SIZE	FITS DEXTER HUBS*
13" ROTOR	8 ON 6.50"	9/16"	4 BOLT, DEXTER	16" AND UP	008-399-05, 008-399-06

### K71-2R-133-8DD-9-DDD



QTY	PART NUMBER	DESCRIPTION
2	070-RTR-133-8-9-D	GAL-DEX ROTOR
2	K71-DBC-250-D	GAL-DEX CALIPER
2	090-CMB-133-8DD-D	GAL-DEX BRACKET
2	K71-DBC-250-PAD	E-COAT BACKED BRAKE PADS
4	007-DBC-MHGB	CALIPER GUIDE BOLTS

### K71-2R-133-8DD-9-DSD



QTY	PART NUMBER	DESCRIPTION
2	070-RTR-133-8-9-D	GAL-DEX ROTOR
2	K71-DBC-250-SS	STAINLESS CALIPER
2	090-CMB-133-8DD-D	GAL-DEX BRACKET
2	K71-DBC-250-PAD-SS	STAINLESS BACKED BRAKE PADS
4	007-DBC-MHGB	CALIPER GUIDE BOLTS

### K71-2R-133-8DD-9-SSS



QTY	PART NUMBER	DESCRIPTION
2	070-RTR-133-8-9-SS	STAINLESS ROTOR
2	K71-DBC-250-SS	STAINLESS CALIPER
2	090-CMB-133-8DD-SS	STAINLESS BRACKET
2	K71-DBC-250-PAD-SS	STAINLESS BACKED BRAKE PADS
4	007-DBC-MHGB	CALIPER GUIDE BOLTS

**KITS ON THIS PAGE CANNOT BE USED WITH  
DEXTER 008-287 SERIES HUBS**

\*FOR MORE INFORMATION ABOUT MATCHING HUBS, SEE HUBS & COMPONENTS SECTION

# BOXED DISC BRAKE KITS

## 8,000 LBS. CAPACITY

SIZE	BOLT PATTERN	STUDS	BRAKE FLANGE	WHEEL SIZE	FITS DEXTER HUBS*
13" ROTOR	8 ON 6.50"	5/8"	4 BOLT, DEXTER	16" AND UP	008-287-14, 008-287-17

### K71-2R-133-8D-5-DDD



QTY	PART NUMBER	DESCRIPTION
2	070-RTR-133-8-5-D	GAL-DEX ROTOR
2	K71-DBC-250-D	GAL-DEX CALIPER
2	090-CMB-133-8D-D	GAL-DEX BRACKET
2	K71-DBC-250-PAD	E-COAT BACKED BRAKE PADS
4	007-DBC-MHGB	CALIPER GUIDE BOLTS

### K71-2R-133-8D-5-DSD



QTY	PART NUMBER	DESCRIPTION
2	070-RTR-133-8-5-D	GAL-DEX ROTOR
2	K71-DBC-250-SS	STAINLESS CALIPER
2	090-CMB-133-8D-D	GAL-DEX BRACKET
2	K71-DBC-250-PAD-SS	STAINLESS BACKED BRAKE PADS
4	007-DBC-MHGB	CALIPER GUIDE BOLTS

### K71-2R-133-8D-5-SSS



QTY	PART NUMBER	DESCRIPTION
2	070-RTR-133-8-5-SS	STAINLESS ROTOR
2	K71-DBC-250-SS	STAINLESS CALIPER
2	090-CMB-133-8D-SS	STAINLESS BRACKET
2	K71-DBC-250-PAD-SS	STAINLESS BACKED BRAKE PADS
4	007-DBC-MHGB	CALIPER GUIDE BOLTS

**KITS ON THIS PAGE CANNOT BE USED WITH DEXTER 008-399 SERIES HUBS**

*\*FOR MORE INFORMATION ABOUT MATCHING HUBS, SEE HUBS & COMPONENTS SECTION*

# BOXED DISC BRAKE KITS

## 8,000 LBS. CAPACITY



SIZE	BOLT PATTERN	STUDS	BRAKE FLANGE	WHEEL SIZE	FITS DEXTER HUBS*
13" ROTOR	8 ON 6.50"	5/8"	4 BOLT, DEXTER	16" AND UP	008-399-07, 008-399-08

### K71-2R-133-8DD-5-DDD



QTY	PART NUMBER	DESCRIPTION
2	070-RTR-133-8-5-D	GAL-DEX ROTOR
2	K71-DBC-250-D	GAL-DEX CALIPER
2	090-CMB-133-8DD-D	GAL-DEX BRACKET
2	K71-DBC-250-PAD	E-COAT BACKED BRAKE PADS
4	007-DBC-MHGB	CALIPER GUIDE BOLTS

### K71-2R-133-8DD-5-DSD



QTY	PART NUMBER	DESCRIPTION
2	070-RTR-133-8-5-D	GAL-DEX ROTOR
2	K71-DBC-250-SS	STAINLESS CALIPER
2	090-CMB-133-8DD-D	GAL-DEX BRACKET
2	K71-DBC-250-PAD-SS	STAINLESS BACKED BRAKE PADS
4	007-DBC-MHGB	CALIPER GUIDE BOLTS

### K71-2R-133-8DD-5-SSS



QTY	PART NUMBER	DESCRIPTION
2	070-RTR-133-8-5-SS	STAINLESS ROTOR
2	K71-DBC-250-SS	STAINLESS CALIPER
2	090-CMB-133-8DD-SS	STAINLESS BRACKET
2	K71-DBC-250-PAD-SS	STAINLESS BACKED BRAKE PADS
4	007-DBC-MHGB	CALIPER GUIDE BOLTS

**KITS ON THIS PAGE CANNOT BE USED WITH DEXTER 008-287 SERIES HUBS**

*\*FOR MORE INFORMATION ABOUT MATCHING HUBS, SEE HUBS & COMPONENTS SECTION*



# BOXED DISC BRAKE KITS

## 8,000 LBS. CAPACITY

SIZE	BOLT PATTERN	STUDS	BRAKE FLANGE	WHEEL SIZE	LUBRICATION
13" HUB-ROTOR	8 ON 6.50"	SEE BELOW	4 BOLT, DEXTER	16" AND UP	GREASE OR OIL

### K71-2H-133-8D-9-DDD



QTY	PART NUMBER	DESCRIPTION
2	008-R/H-133-8-9-D-S	GAL-DEX HUB-ROTOR, 9/16" STUDS
2	K71-DBC-250-D	GAL-DEX CALIPER
2	090-CMB-133-8DI-D	GAL-DEX BRACKET
2	K71-DBC-250-PAD	E-COAT BACKED BRAKE PADS
4	007-DBC-MHGB	CALIPER GUIDE BOLTS

### K71-2H-133-8D-9-DSD



QTY	PART NUMBER	DESCRIPTION
2	008-R/H-133-8-9-D-S	GAL-DEX HUB-ROTOR, 9/16" STUDS
2	K71-DBC-250-SS	STAINLESS CALIPER
2	090-CMB-133-8DI-D	GAL-DEX BRACKET
2	K71-DBC-250-PAD-SS	STAINLESS BACKED BRAKE PADS
4	007-DBC-MHGB	CALIPER GUIDE BOLTS

### K71-2H-133-8D-5-DDD



QTY	PART NUMBER	DESCRIPTION
2	008-R/H-133-8-5-D-S	GAL-DEX HUB-ROTOR, 5/8" STUDS
2	K71-DBC-250-D	GAL-DEX CALIPER
2	090-CMB-133-8DI-D	GAL-DEX BRACKET
2	K71-DBC-250-PAD	E-COAT BACKED BRAKE PADS
4	007-DBC-MHGB	CALIPER GUIDE BOLTS

### K71-2H-133-8D-5-DSD



QTY	PART NUMBER	DESCRIPTION
2	008-R/H-133-8-5-D-S	GAL-DEX HUB-ROTOR, 5/8" STUDS
2	K71-DBC-250-SS	STAINLESS CALIPER
2	090-CMB-133-8DI-D	GAL-DEX BRACKET
2	K71-DBC-250-PAD-SS	STAINLESS BACKED BRAKE PADS
4	007-DBC-MHGB	CALIPER GUIDE BOLTS

# BOXED DISC BRAKE KITS

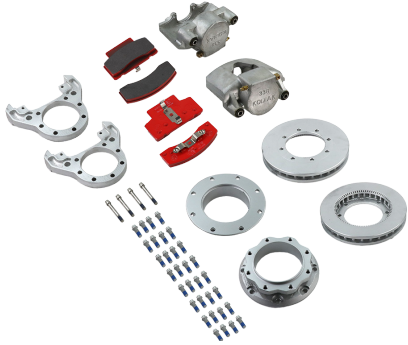
## 10,000-12,000 LBS. CAPACITY



SIZE	BOLT PATTERN	STUDS	BRAKE FLANGE	WHEEL SIZE	LUBRICATION
11" ROTOR	8 ON 6.50"	5/8"	7 BOLT	16" DUAL 17.5" SINGLE	GREASE OR OIL

### K71-2R-11-10D-DDDD

10,000 LBS. INBOARD



### K71-2R-11-10D-HD-DEER

10,000 LBS. INBOARD



QTY	PART NUMBER	DESCRIPTION
2	070-RTR-11-10D-D	GAL-DEX ROTOR
1	K71-DBC-338-D-L	GAL-DEX CALIPER, LEFT
1	K71-DBC-338-D-R	GAL-DEX CALIPER, RIGHT
2	090-CMB-11-10D-D	GAL-DEX BRACKET
2	K71-DBC-338-PAD	E-COAT BACKED BRAKE PADS
2	033-RTR-11-10D-D-SPC-D	GAL-DEX SPACER
32	007-RTR-11-13-BOLT	CALIPER GUIDE BOLTS
4	007-DBC-338-MHGB-SS	CALIPER GUIDE BOLTS

FITS DEXTER HUB 008-288-03  
4.79" INNER BEARING SHOULDER TO BRAKE FLANGE

QTY	PART NUMBER	DESCRIPTION
2	070-RTR-11-10Q-D	GAL-DEX ROTOR
1	K71-DBC-2250-E-L	E-COAT CALIPER, LEFT
1	K71-DBC-2250-E-R	E-COAT CALIPER, RIGHT
2	090-CMB-11-10D-HD-E	E-COAT BRACKET
2	K71-DBC-2250-PAD	E-COAT BACKED BRAKE PADS
2	033-RTR-11-10D-SPC	GAL-DEX SPACER
16	007-RTR-11-13-BOLT	CALIPER GUIDE BOLTS
16	007-H/S-11-12L-LHSCS	BOLT SPACER

FITS DEXTER HUB 008-288-03 ON TORFLEX® AXLES,  
4.79" INNER BEARING SHOULDER TO BRAKE FLANGE



# BOXED DISC BRAKE KITS

## 10,000-12,000 LBS. CAPACITY

SIZE	BOLT PATTERN	STUDS	BRAKE FLANGE	WHEEL SIZE	LUBRICATION
11" ROTOR	8 ON 6.50"	5/8"	7 BOLT	16" DUAL 17.5" SINGLE	GREASE OR OIL

### K71-2R-11-10D-DEER43

10,000 LBS. INBOARD



### K71-2R-11-12D-HD-DEER

12,000 LBS. INBOARD



QTY	PART NUMBER	DESCRIPTION
2	070-RTR-11-10Q-D	GAL-DEX ROTOR
1	K71-DBC-2250-E-L	E-COAT CALIPER, LEFT
1	K71-DBC-2250-E-R	E-COAT CALIPER, RIGHT
2	090-CMB-11-10D430-1	E-COAT BRACKET TOP
2	090-CMB-11-10D430-2	E-COAT BRACKET BOTTOM
2	K71-DBC-2250-PAD	E-COAT BACKED BRAKE PADS
4	005-176-00	CALIPER BRACKET LOCK WASHER
4	007-201-00	CALIPER BRACKET HEX BOLT
4	006-017-01	CALIPER BRACKET LOCK NUT
16	070-H/S-11-12L-LHSCS	BOLT SPACER
2	033-RTR-11-10D430-SPCR	RAW SPACER
16	007-RTR-11-13-BOLT	CALIPER GUIDE BOLTS

FITS DEXTER HUB 008-430-03  
 SPRUNG APPLICATIONS ONLY  
 3.92" INNER BEARING SHOULDER TO BRAKE FLANGE

QTY	PART NUMBER	DESCRIPTION
2	070-RTR-11-10Q-D	GAL-DEX ROTOR
1	K71-DBC-2250-E-L	E-COAT CALIPER, LEFT
1	K71-DBC-2250-E-R	E-COAT CALIPER, RIGHT
2	090-CMB-11-12D-HD-E	E-COAT BRACKET
2	K71-DBC-2250-PAD	E-COAT BACKED BRAKE PADS
2	033-RTR-11-12Q-SPCR	RAW SPACER
16	070-RTR-11-13-BOLT	CALIPER GUIDE BOLTS
16	070-H/S-11-12L-LHSCS	BOLT SPACER

FITS DEXTER HUB 008-214-08 WITH  
 DRUM BRAKE FLANGE CONFIGURATION  
 4.79" INNER BEARING SHOULDER TO BRAKE FLANGE

# BRAKE HOSES

## STANDARD FLEXIBLE HOSES



### STRAIGHT BRAKE HOSE



PART NUMBER	SIZE	PART NUMBER	SIZE
034-BH-3MFS-012	12" (1')	034-BH-3MFS-096	96" (8')
034-BH-3MFS-014	14" (1" 2")	034-BH-3MFS-101	101" (8" 5")
034-BH-3MFS-017	17" (1" 5")	034-BH-3MFS-110	110" (9" 2")
034-BH-3MFS-018	18" (1" 6")	034-BH-3MFS-180	180" (15')
034-BH-3MFS-024	24" (2')	034-BH-3MFS-192	192" (16')
034-BH-3MFS-030	30" (2" 6")	034-BH-3MFS-204	204" (17')
034-BH-3MFS-036	36" (3')	034-BH-3MFS-216	216" (18')
034-BH-3MFS-040	40" (3" 4")	034-BH-3MFS-228	228" (19')
034-BH-3MFS-042	42" (3" 6")	034-BH-3MFS-240	240" (20')
034-BH-3MFS-046	46" (3" 10")	034-BH-3MFS-252	252" (21')
034-BH-3MFS-048	48" (4')	034-BH-3MFS-264	264" (22')
034-BH-3MFS-054	54" (4" 6")	034-BH-3MFS-276	276" (23')
034-BH-3MFS-057	57" (4" 9")	034-BH-3MFS-288	288" (24')
034-BH-3MFS-072	72" (6')	034-BH-3MFS-300	300" (25')
034-BH-3MFS-080	80" (6" 8")	034-BH-3MFS-312	312" (26')
034-BH-3MFS-086	86" (7" 2")	034-BH-3MFS-360	360" (30')

1/8" ID DOT, 3/16" THREAD PITCH  
INVERTED MALE/MALE FITTINGS WITH SWIVEL

### FITTINGS



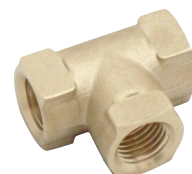
**034-BH-C-3FIF**  
UNION, FEMALE, 3/16"



**034-BH-L-3FIF**  
L-FITTING, FEMALE, 3/16"



**034-BH-T-3FIF**  
T-FITTING, FEMALE, 3/16"

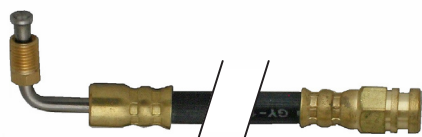


**034-BH-T-4-3FIF**  
T-FITTING, FEMALE  
ONE 3/16" AND TWO 1/4"



**034-BH-X-3FIF**  
CROSS FITTING, FEMALE,  
3/16"

### SPECIALTY HOSES



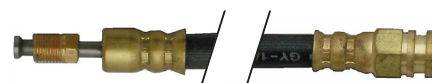
**90 DEGREE MALE, 3/16" MALE/MALE**

PART NUMBER	SIZE
034-BH-3MFS90-019	19" (1" 7")
034-BH-3MFS90-021	21" (1" 9")



**90 DEGREE MALE, 3/16" MALE/FEMALE**

PART NUMBER	SIZE
034-BH-3MFS90-021	21" (1" 9")
034-BH-3MFS90FF-021	21" (1" 9")



**MALE FLARE WITH BRASS FLARE NUT,  
18" SWIVEL MALE, 3/16" MALE/FEMALE**

PART NUMBER	SIZE
034-BH-3MFSFF-018	18" (1" 6")

# CALIPERS & COMPONENTS

## BRAKE PADS

### K71-DBC-225-PAD



QTY	DESCRIPTION
2	INNER PADS, E-COAT BACK
2	OUTER PADS, E-COAT BACK

FOR K71-DBC-225 CALIPERS  
3,500 - 6,000 LBS.

### K71-DBC-225-PAD-SS



QTY	DESCRIPTION
2	INNER PADS, STAINLESS STEEL BACK
2	OUTER PADS, STAINLESS STEEL BACK

FOR K71-DBC-225 CALIPERS  
3,500 - 6,000 LBS.

### K71-DBC-250-PAD



QTY	DESCRIPTION
2	INNER PADS, E-COAT BACK
2	OUTER PADS, E-COAT BACK

FOR K71-DBC-250 CALIPERS  
7,000 - 8,000 LBS.

### K71-DBC-250-PAD-SS



QTY	DESCRIPTION
2	INNER PADS, STAINLESS STEEL BACK
2	OUTER PADS, STAINLESS STEEL BACK

FOR K71-DBC-250 CALIPERS  
7,000 - 8,000 LBS.

### K71-DBC-338-PAD



QTY	DESCRIPTION
2	INNER PADS, E-COAT BACK
2	OUTER PADS, E-COAT BACK

FOR K71-DBC-338-D AND K71-DBC-338-SS  
CALIPERS, 10,000 LBS.

### K71-DBC-2250-PAD



QTY	DESCRIPTION
2	INNER PADS, E-COAT BACK
2	OUTER PADS, E-COAT BACK

FOR K71-DBC-2250-E AND  
K71-DBC-338-HD-E CALIPERS,  
8,000 - 12,000 LBS.

BRAKE PADS COME PACKAGED, ADDITIONAL COMPONENTS SOLD SEPARATELY

# CALIPERS & COMPONENTS

## BOXED CALIPER KITS



### 3,500 - 6,000 LBS. CAPACITY

#### K71-DBC-225-D



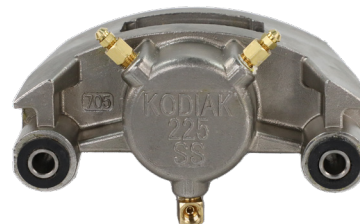
QTY	DESCRIPTION
1	GAL-DEX CALIPER 2-1/4" STAINLESS PISTON
1	E-COAT BACKED BRAKE PADS
2	CALIPER GUIDE BOLT

#### K71-DBC-225-KG



QTY	DESCRIPTION
1	KODAGUARD CALIPER 2-1/4" STAINLESS PISTON
1	STAINLESS BACKED BRAKE PADS
2	CALIPER GUIDE BOLT

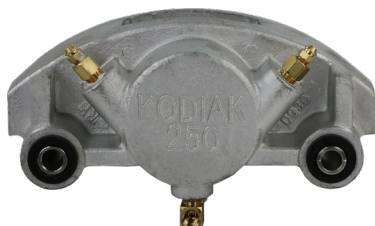
#### K71-DBC-225-SS



QTY	DESCRIPTION
1	STAINLESS STEEL CALIPER 2-1/4" STAINLESS PISTON
1	STAINLESS BACKED BRAKE PADS
2	CALIPER GUIDE BOLT

### 7,000 - 8,000 LBS. CAPACITY

#### K71-DBC-250-D



QTY	DESCRIPTION
1	GAL-DEX CALIPER, 2-1/2" STAINLESS PISTON
1	E-COAT BACKED BRAKE PADS
2	CALIPER GUIDE BOLT

#### K71-DBC-250-SS



QTY	DESCRIPTION
1	STAINLESS STEEL CALIPER, 2-1/2" STAINLESS PISTON
1	STAINLESS STEEL BACKED BRAKE PADS
2	CALIPER GUIDE BOLT

### 10,000 - 12,000 LBS. CAPACITY

**K71-DBC-2250-E-L (LH)**  
**K71-DBC-2250-E-R (RH)**



**QTY DESCRIPTION**

- 1 E-COAT CALIPER, 2-1/2" HARD CHROME PISTON

---

- 1 E-COAT BACKED BRAKE PADS

---

- 2 RETAINING CLIPS WITH BOLTS

*RIGHT HAND SHOWN*

**K71-DBC-338-HD-E-L (LH)**  
**K71-DBC-338-HD-E-R (RH)**



**QTY DESCRIPTION**

- 1 E-COAT CALIPER, 3-3/8" HARD CHROME PISTON

---

- 1 E-COAT BACKED BRAKE PADS

---

- 2 RETAINING CLIPS WITH BOLTS

*RIGHT HAND SHOWN*

**K71-DBC-338-D-L (LH)**  
**K71-DBC-338-D-R (RH)**



**QTY DESCRIPTION**

- 1 GAL-DEX CALIPER, 3-3/8" STAINLESS STEEL PISTON

---

- 1 E-COAT BACKED BRAKE PADS

---

- 2 CALIPER GUIDE BOLT

*RIGHT HAND SHOWN*

**K71-DBC-338-SS-L (LH)**  
**K71-DBC-338-SS-R (RH)**



**QTY DESCRIPTION**

- 1 STAINLESS STEEL CALIPER, 3-3/8" STAINLESS STEEL PISTON

---

- 1 E-COAT BACKED BRAKE PADS

---

- 2 CALIPER GUIDE BOLT

*LEFT HAND SHOWN*

# CALIPERS & COMPONENTS

## MOUNTING HARDWARE



**090-CMB-10I-D**



FOR 10" HUB-ROTORS  
GAL-DEX

**090-CMB-10U-D**



FOR 10" ROTORS  
GAL-DEX

**090-CMB-10-U-SS**



FOR 10" ROTORS  
STAINLESS STEEL

**090-CMB-12-U-D**



FOR 12" HUB-ROTORS  
GAL-DEX

**090-CMB-12-U-SS**



FOR 12" ROTORS  
STAINLESS STEEL

**090-CMB-133-7I-D**



FOR 133-8-9 AND 133-8-5  
HUB-ROTORS, GAL-DEX

**090-CMB-133-7-D**



FOR 133-7-8 ROTOR  
GAL-DEX

**090-CMB-133-7-SS**



FOR, 133-7-8 ROTOR  
STAINLESS STEEL

**090-CMB-133-7.2D**



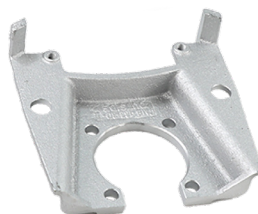
FOR 133-8-9 & 133-8-5  
ROTORS GAL-DEX

**090-CMB-133-8D-D**



FOR 133-8D-9 & 133-8D-5  
ROTORS, GAL-DEX

**090-CMB-133-8DD-D**



FOR 133-8DD-9 & 133-8DD-5  
ROTORS, GAL-DEX

**090-CMB-133-8D-SS**



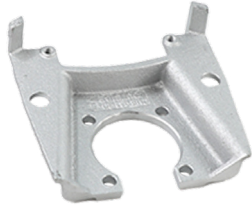
FOR 133-8-9 & 133-8-5  
ROTORS, STAINLESS STEEL



# CALIPERS & COMPONENTS

## MOUNTING HARDWARE

**090-CMB-133-8DI-D**



FOR 133-8-9 & 133-8-5  
HUB-ROTORS, GAL-DEX

**090-CMB-11-10D-D**



FOR SINGLE & DUAL WHEEL  
ROTOR, GAL-DEX

**090-CMB-11-10D430-1**  
**090-CMB-11-10D430-2**



FOR HD SINGLE & DUAL  
WHEEL ROTOR, E-COAT

**090-CMB-13-10D-D**



FOR SINGLE WHEEL ROTOR  
ONLY, GAL-DEX

**090-CMB-11-8D-HD-E**



FOR 11-8D-9 AND 11-8D-10  
ROTORS, E-COAT

**090-CMB-13-10D-HD-E**



FOR HD SINGLE WHEEL  
ROTOR, E-COAT

**090-CMB-11-12D-HD-E**



FOR HD DUAL WHEEL ROTOR,  
E-COAT

**007-DBC-MHGB**



CALIPER GUIDE BOLT FOR  
225 AND 250 BRACKETS

**007-DBC-338-MHGB**



CALIPER GUIDE BOLT FOR  
338 BRACKETS

*MOUNTING HARDWARE IS SOLD UNPACKAGED AND DOES NOT INCLUDE ADDITIONAL COMPONENTS*

# HUBS & COMPONENTS

## HUBS



**008-B78-05**



3,700 LBS. STAINLESS STEEL  
5 ON 4.50"

PAIRS WITH KODIAK  
070-RTR-10 ROTORS

**008-B79-05**



6,000 LBS. STAINLESS STEEL  
6 ON 5.50"

PAIRS WITH KODIAK  
070-RTR-12 ROTORS

**008-B80-05**



7,000 LBS. STAINLESS STEEL  
8 ON 6.50"

PAIRS WITH KODIAK  
070-RTR-133-7-8 ROTORS

**008-436-04**



3,700 LBS. GAL-DEX  
5 ON 4.50" - 2" STUD

PAIRS WITH KODIAK  
070-RTR-10 ROTORS

**008-445-15**



6,000 LBS. GAL-DEX  
6 ON 5.50" - 2" STUD

PAIRS WITH KODIAK  
070-RTR-12 ROTORS

**008-444-03**



7,000 LBS. GAL-DEX  
8 ON 6.50" - 2" STUD

PAIRS WITH KODIAK  
070-RTR-133-7-8 ROTORS

**008-562-03**



3,700 LBS. GALVANIZED  
5 ON 4.50" - 2.5" STUD

PAIRS WITH KODIAK  
070-RTR-10 ROTORS

**008-655-04**



6,000 LBS. GALVANIZED  
6 ON 5.50" - 2.5" STUD

PAIRS WITH KODIAK  
070-RTR-12 ROTORS

**008-865-03**



7,000 LBS. GALVANIZED  
8 ON 6.50" - 2.5" STUD

PAIRS WITH KODIAK  
070-RTR-133-7-8 ROTORS

*HUBS ARE UNPACKAGED AND DO NOT INCLUDE BEARINGS AND SEALS*

**008-399-05**



8,000 LBS. PAINTED  
8 ON 6.50", 9/16" STUDS  
GREASE

PAIRS WITH KODIAK  
090-CMB-8DD CALIPER  
MOUNTING BRACKET

**008-399-06**



8,000 LBS. PAINTED  
8 ON 6.50", 9/16" STUDS  
OIL

PAIRS WITH KODIAK  
090-CMB-8DD CALIPER  
MOUNTING BRACKET

**008-399-07**



8,000 LBS. PAINTED  
8 ON 6.50", 5/8" STUDS  
GREASE

PAIRS WITH KODIAK  
090-CMB-8DD CALIPER  
MOUNTING BRACKET

**008-399-08**



8,000 LBS. PAINTED  
8 ON 6.50", 5/8" STUDS  
OIL

PAIRS WITH KODIAK  
090-CMB-8DD CALIPER  
MOUNTING BRACKET

**008-287-10**



8,000 LBS. PAINTED  
8 ON 6.50", 5/8" STUDS  
GREASE

PAIRS WITH KODIAK  
090-CMB-133-8D CALIPER  
MOUNTING BRACKETS

**008-287-11**



8,000 LBS. PAINTED  
8 ON 6.50", 9/16" STUDS  
GREASE

PAIRS WITH KODIAK  
090-CMB-133-8D AND  
090-CMB-133-8DI CALIPER  
MOUNTING BRACKETS

**008-287-14**



8,000 LBS. PAINTED  
8 ON 6.50", 9/16" STUDS  
OIL

PAIRS WITH KODIAK  
090-CMB-133-8D AND  
090-CMB-133-8DI CALIPER  
MOUNTING BRACKETS

**008-287-17**



8,000 LBS. PAINTED  
8 ON 6.50", 5/8" STUDS  
OIL

PAIRS WITH KODIAK  
090-CMB-133-8D AND  
090-CMB-133-8DI CALIPER  
MOUNTING BRACKETS

# HUBS & COMPONENTS

## HUB-ROTORS



**008-R/H-10-D-S**



10" GAL-DEX  
1/2" STUD

**008-R/H-12-D-S**



12" GAL-DEX  
1/2" STUD

**008-R/H-133-7-8-D-S**



13" GAL-DEX  
1/2" STUD

**008-R/H-133-8-9-D-S**



13" GAL-DEX  
9/16" STUD

**008-R/H-133-8-9-D-S-C**



13" GAL-DEX  
9/16" STUD WITH CAP

**008-R/H-133-8-5-D-S**



13" GAL-DEX  
5/8" STUD

**008-R/H-133-8-5-D-S-C**



13" GAL-DEX  
5/8" STUD WITH CAP

*HUB-ROTORS ARE UNPACKAGED AND DO NOT INCLUDE BEARINGS AND SEALS*

# HUBS & COMPONENTS

## SPACERS & HARDWARE

**033-RTR-11-10D-D430-SPCR**



3" RETROFIT SPACER  
RAW

**033-RTR-11-10D-D-SPC**



10,000 LBS. GD SPACER  
RAW

**033-RTR-11-10D-D-SPC-D**



10,000 LBS. GD SPACER  
GAL-DEX

**033-RTR-11-12Q-SPCR**



12,000 LBS. HD SPACER  
RAW

**006-098-00**



3,500-7,000 CAP NUTS  
STAINLESS STEEL, 1/2" TREAD

**007-R/H-LB-1.69**



1.69" LENGTH, 0.545 KNURL  
1/2"-20 UNF-2A  
FITS KODIAK HUB-ROTORS  
008-R/H-10 AND 008-R/H-12

**007-R/H-LB-2.0**



2.00" LENGTH, 0.545 KNURL  
1/2"-20 UNF-2A  
FITS KODIAK HUB-ROTOR  
008-R/H-133-7

**007-R/H-LB-2.5-9**



2.50" LENGTH, 0.685 KNURL  
9/16"-18 UNF-2A  
FITS KODIAK HUB-ROTOR  
008-R/H-133-8

**007-R/H-LB-3.165-5**



3.165" LENGTH, 0.685 KNURL  
5/8"-18 UNF-2A  
FITS KODIAK HUB-ROTOR  
008-R/H-133-8

# HUBS & COMPONENTS

## ROTORS



**070-RTR-10-D**



10" GAL-DEX  
3,500 LBS.

**070-RTR-10-SS**



10" STAINLESS STEEL  
3,500 LBS.

**PAIRS WITH DEXTER HUBS:**

008-436-04 - (ZINC)  
008-562-03 - (GALV.)  
008-B78-05 (STAINLESS)

**070-RTR-12-D**



12" GAL-DEX  
6,000 LBS.

**070-RTR-12-SS**



12" STAINLESS STEEL  
6,000 LBS.

**PAIRS WITH DEXTER HUBS:**

008-445-15 - (ZINC)  
008-655-04 - (GALV.)  
008-B79-05 (STAINLESS)

**070-RTR-133-7-8-D**



13" GAL-DEX  
7,000 LBS., 1/2" BOLT

**070-RTR-133-7-8-SS**



13" STAINLESS STEEL  
7,000 LBS., 1/2" BOLT

**PAIRS WITH DEXTER HUBS:**

008-444-03 - (ZINC)  
008-865-03 - (GALV.)  
008-B80-05 (STAINLESS)

**070-RTR-133-8-9-D**



13" GAL-DEX  
8,000 LBS., 9/16" BOLT

**070-RTR-133-8-9-SS**



13" STAINLESS STEEL  
8,000 LBS., 9/16" BOLT

**PAIRS WITH DEXTER HUBS  
AND 090-CMB-133-8DD**

008-399-05 - GREASE  
008-399-06 - OIL

**PAIRS WITH DEXTER HUBS  
AND 090-CMB-133-8D OR  
090-CMB-133-7.2D**

008-287-10 - GREASE  
008-287-11 - OIL

### 070-RTR-133-8-5-D



13" GAL-DEX  
8,000 LBS., 5/8" BOLT

### 070-RTR-133-8-5-SS



13" STAINLESS STEEL  
8,000 LBS., 5/8" BOLT

**PAIRS WITH DEXTER HUBS:**

- 008-399-07 - GREASE
- 008-399-08 - OIL
- 008-287-14 - GREASE\*
- 008-287-17 - OIL\*

### 070-RTR-13-10-D



13" GAL-DEX  
10,000-12,000 LBS.

### 070-RTR-11-10Q-D



11" GAL-DEX  
10,000-12,000 LBS.

### 070-RTR-11-10D-D



11.6" GAL-DEX  
10,000-12,000 LBS.

*FOR A LIST OF DEXTER HUBS THAT FIT THE 10,000 - 12,000 LBS. ROTORS, SEE THE FULL DISC BRAKE KIT SECTION  
ROTORS ARE UNPACKAGED AND DO NOT INCLUDE HARDWARE*



## DESIGNED FOR ALL THE WAYS YOU WORK & PLAY



[WWW.DEXTERGROUP.COM](http://WWW.DEXTERGROUP.COM)

# SERVICE KITS

## BEARING & SEAL KITS



### K71-717-00



QTY	P/N	DESCRIPTION
1	005-101-00	WASHER, TANG
1	010-019-00	SEAL, GREASE 1.72"
1	019-002-00	COTTER PIN
1	031-031-01	BEARING CUP, L44610
1	031-031-02	BEARING CONE, L44649
1	031-033-01	BEARING CUP, L68111
1	031-033-02	BEARING CONE, L68149

*FOR 3,500-3,700 LBS.  
HUBS & HUB-ROTORS*

### K71-719-00



QTY	P/N	DESCRIPTION
1	005-101-00	WASHER, TANG
1	010-036-00	SEAL, GREASE 2.25"
1	019-002-00	COTTER PIN
1	031-029-01	BEARING CUP, 15245
1	031-029-02	BEARING CONE, 15123
1	031-030-01	BEARING CUP, 25520
1	031-030-02	BEARING CONE, 25580

*FOR 6,000 LBS. HUBS AND HUB-ROTORS*

### K71-720-00



QTY	P/N	DESCRIPTION
1	005-101-00	WASHER, TANG
1	010-036-00	SEAL, GREASE 2.25"
1	019-002-00	COTTER PIN
1	031-017-01	BEARING CUP, 14276
1	031-017-02	BEARING CONE, 14125A
1	031-030-01	BEARING CUP, 25520
1	031-030-02	BEARING CONE, 25580

*FOR 7,000 LBS. HUB-ROTORS  
WITH 1/2" STUDS*

### K71-721-00



QTY	P/N	DESCRIPTION
1	010-036-00	SEAL, GREASE 2.25"
1	019-002-00	COTTER PIN
1	031-028-01	BEARING CUP, 02420
1	031-028-02	BEARING CONE, 02475
1	031-030-01	BEARING CUP, 25520
1	031-030-02	BEARING CONE, 25580

*FOR 7,200-8,000 LBS.  
HUBS & HUB-ROTORS*

### K71-722-00



QTY	P/N	DESCRIPTION
1	010-051-02	SEAL, OIL 2.875"
1	031-019-01	BEARING CUP, 382A
1	031-019-02	BEARING CONE, 387A
1	031-030-01	BEARING CUP, 25520
1	031-030-02	BEARING CONE, 25580

*FOR 9,000-10,000 LBS.  
HUBS AND HUB-ROTORS*



### K71-303-00



QTY	P/N	DESCRIPTION
2	010-019-00	SEAL, GREASE 1.72" ID
<i>3,500-3,700 LBS. HUBS &amp; HUB-ROTORS 2.565 OD</i>		

### K71-305-00



QTY	P/N	DESCRIPTION
2	010-036-00	SEAL, GREASE 2.25" ID
<i>6,000-8,000 LBS. HUBS AND HUB-ROTORS 3.376 OD</i>		

### K71-386-00



QTY	P/N	DESCRIPTION
2	010-063-00	SEAL, OIL 2.25" ID
<i>FITS 7,200-8,000 LBS. HUBS 3.376 O.D.</i>		

### K71-387-00



QTY	P/N	DESCRIPTION
2	010-051-02	SEAL, OIL 2.875" ID
<i>10,000 LBS. HUBS, 3.785" OD</i>		

# SERVICE KITS

## XL PRO-LUBE™ OIL LUBRICATION SYSTEM



### K71-XLPRO-1980



### K71-XLPRO-2440



QTY	P/N	DESCRIPTION
2	010-XLPROLUBE1980-SEAL	OIL SEAL, 1.72" ID
2	021-XLPROLUBE1980	OIL CAP FOR 3,500 LBS. AXLES
1	088-XLPROLUBE	OIL BATH

QTY	P/N	DESCRIPTION
2	010-XLPROLUBE2440-SEAL	OIL SEAL, 2.25" ID
2	021-XLPROLUBE2440	OIL CAP FOR 5,200 - 6,000 LBS. AXLES
1	088-XLPROLUBE	OIL BATH



## XL PRO-LUBE™

OIL LUBRICATION SYSTEM

- » Upgrade grease hub to oil
- » Semi-clear blue cap makes it easy to visual check oil level
- » Anodized aluminum body
- » Specially formulated lubricant reduces friction and improves bearing life





# SERVICE KITS

## TRAILER BUDDY® BEARING PROTECTOR

### K71-001-00



QTY	P/N	DESCRIPTION
2	021-112-00	BEARING PROTECTOR
<i>3,500 LBS., FITS 19B BRA, 1.980" OD</i>		

### K71-013-00



QTY	P/N	DESCRIPTION
2	021-111-00	BEARING PROTECTOR
<i>5,200 LBS., FITS 23B BRA, 2.328" OD</i>		

### K71-002-00



QTY	P/N	DESCRIPTION
2	021-127-00	BEARING PROTECTOR
<i>6,000 LBS., FITS 23B BRA, 2.441" OD</i>		

### K71-005-00



QTY	P/N	DESCRIPTION
2	021-129-00	BEARING PROTECTOR
<i>7,000 LBS. 2.717" OD FITS 23B BRA</i>		

### K71-017-00



QTY	P/N	DESCRIPTION
2	021-083-00	BRA, 19B
<i>3,500 LBS. FITS 021-112-00</i>		

### K71-019-00



QTY	P/N	DESCRIPTION
2	021-134-00	BRA, 23B
<i>5,200-7,000 LBS. FITS 021-111-00, 021-127-00, AND 021-129-00</i>		



**SPEND TIME ON THE WATER**  
**NOT WORRYING ABOUT YOUR TRAILER!**

[WWW.DEXTERGROUP.COM/BOATTRAILER](http://WWW.DEXTERGROUP.COM/BOATTRAILER)



**TOGETHER**  
CARRYING WHAT MATTERS MOST

**OVER 450+**  
**NORTH AMERICAN**  
**DISTRIBUTION**  
**LOCATIONS**  
**FOR ALL YOUR TRAILER PARTS NEEDS**



**FIND THE LOCATION CLOSEST TO YOU BY  
SCANNING THE CODE OR VISITING  
[WWW.DEXTERAXLE.COM/DISTRIBUTORS](http://WWW.DEXTERAXLE.COM/DISTRIBUTORS)**



**[WWW.DEXTERAXLE.COM/KODIAK](http://WWW.DEXTERAXLE.COM/KODIAK)**

**NO PART OF THIS MANUAL MAY BE REPRODUCED WITHOUT DEXTER'S PERMISSION.  
ALL PART NUMBERS, DIMENSIONS AND SPECIFICATIONS IN THIS CATALOG ARE SUBJECT TO CHANGE WITHOUT NOTICE.**