



INSTALLATION INSTRUCTIONS

Premium Screen Door Grab Bar (990005-00)

CAUTION

Review and understand all installation instructions before beginning installation. Wear proper safety equipment during installation.

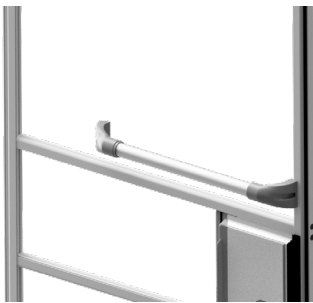
1. This hole should point down when installed.



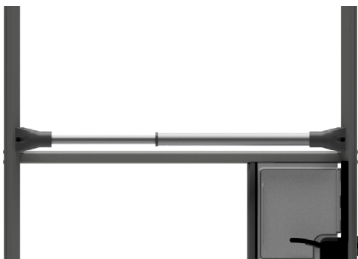
2. "Hook" portion of each mount must fit around the screen frame lip.



3. Hold the first mount to the frame, grab the second mount and pull toward the opposite frame side.



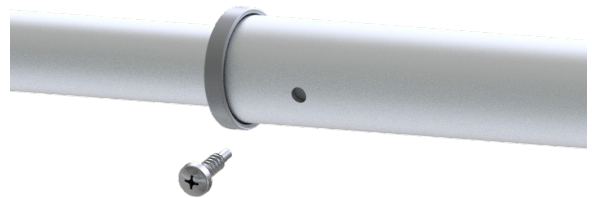
4. When mounts are nested into the frame sides, slide the assembly down until it touches the crossbar as shown.



5. When mounts are seated into frame (shown), use one self-drilling screw per side (3 included) to fix the bar to the door frame. This requires a power drill/driver. Do not overtighten!



6. When the mounting screws are in place, make sure the center bushing is firmly pushed into the large tube. Use the third screw and install into the hole shown using the drill driver. This will fix the bushing/tubes/assembly firmly.



7. The grab bar is intended to help with closing door only, and should not be used as an assist bar or for hanging excessive weight from.

