

Date: April 8, 2009

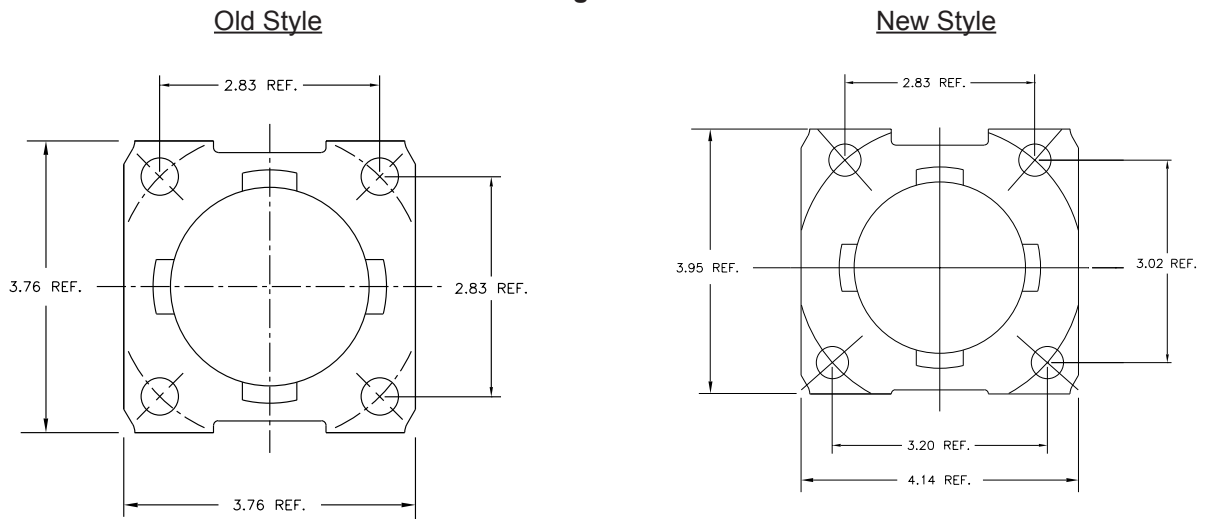
Subject: Customer Advisory – Redesign of D44 Brake

Effective May 2009, Dexter Axle will make a running change to the brake mounting flange used on our D44 series axle. This change will help streamline the production process.

The hole spacing on the flange will change (see Figure A). This means that the current D44 brake assembly K23-454-00 & K23-455-00 will not interchange with the new axle beam. Except for the 036-019-16 backing plate, all other parts of the brake are interchangeable. The old style beams and brakes will be available as service replacement parts.

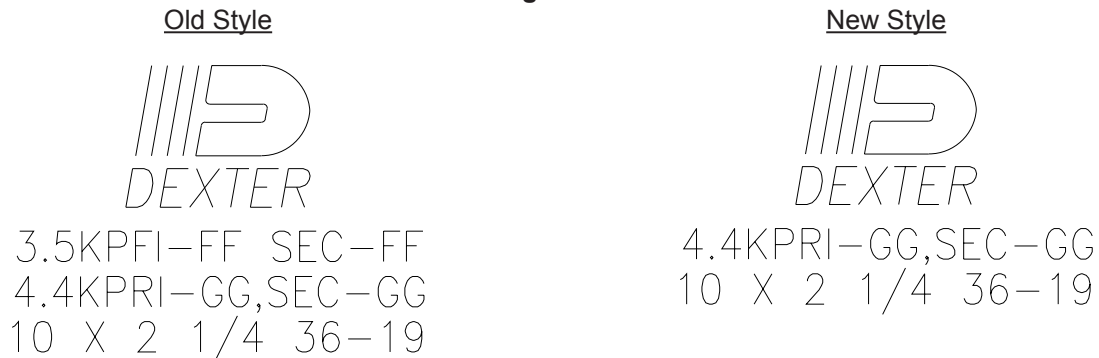
We recommend that trailer manufacturers do not install a new and old style axle on the same unit. To help with identification during the first two months, the new style axles will have a label affixed to designate the “D44 New Style”.

Figure A



You will be able to determine the old style versus new style brake by referring to the measurement of the brake flange in Figure A or by looking at the stamping on the back side of the backing plate (see Figure B).

Figure B



Part Number Cross-Reference

Old Style Part Number	Item Description	New Style Part Number
K23-454-00	LH Complete Brake Assembly	K23-462-00
K23-455-00	RH Complete Brake Assembly	K23-463-00
036-019-16	Backing Plate Assembly	036-019-19

Please contact your Dexter Sales Engineer for additional questions, ordering information, and product availability.



Rick Kapsa
Product Manager