

Date: August 15, 2016

Subject: IAC 8K - 16K Axle Labeling

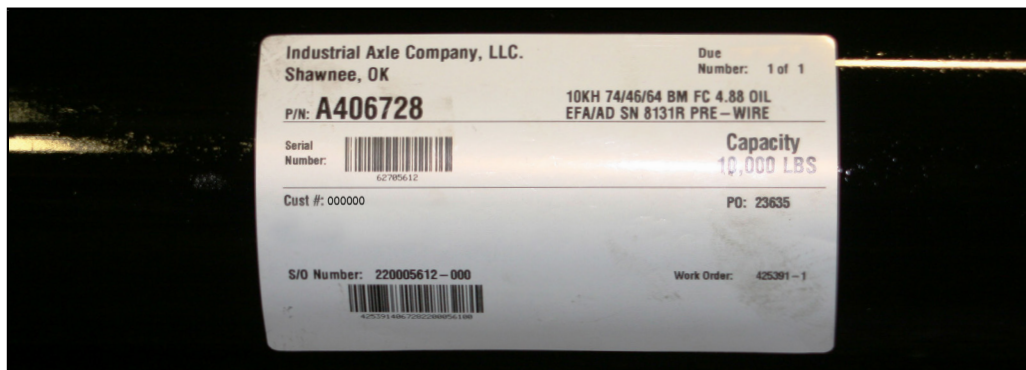
Industrial Axle Co. will be making a change to the identification used on 8K -16K Sprung Axle products. This change is part of the ongoing efforts to support products consistently throughout all product lines.

Until now all 8K-16K Sprung axles produced by IAC, formerly known as AL-KO/Axis or Hayes Axle, were identified with a stainless steel tag attached to the axle tube with 2 pop rivets. (See picture below.) Moving forward these axles will ship with an axle label. The labels are consistent with those currently used by IAC or Dexter plants, and provide a higher level of detailed axle and customer order information. (See picture below.)

Since 2012 axle tube etching is a secondary method of identification. This process will remain unchanged.

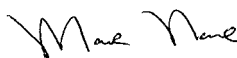


Axle Tag



Axle Label

Please contact your Dexter Sales Engineer if you have additional questions or need further assistance.



Mark Nave
Market Manager