

Date: November 26, 2018

**Subject: Dexter's Heavy Duty Suspension System (HDSS) Expanded Offering**

In keeping with our commitment to product innovation, Dexter is pleased to announce an expanded offering to our Heavy Duty Suspension System (HDSS). The original 49" spaced, 30,000 lbs. tandem, underslung system introduced July 31, 2015 on product bulletin 377 and later upgraded in capacity to 45,000 lbs. August 15, 2016 on product bulletin 384 has now been broadened to include multiple axle spacings and spring mounting configurations.

Continued development and testing has allowed us to increase the carrying capacity of this suspension up to 50,000 lbs. in tandem and 75,000 lbs. in triple axle sets utilizing our D200 axle. These additional offerings are available immediately.

**Standard Features:**

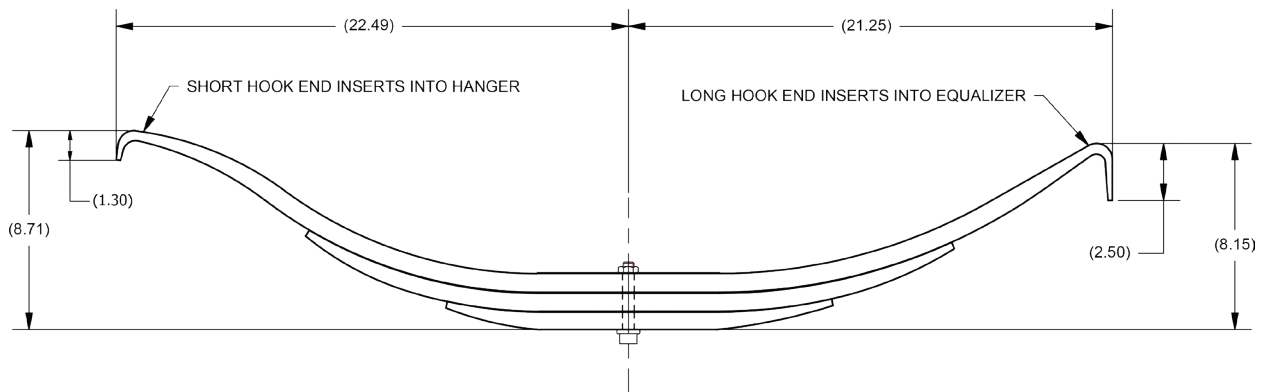
- Designed to be used with double slipper springs.
- Available in Underslung or Overslung spring orientation in 49", 54", and 60" axle spacings.
- Heavy duty mechanical suspension designed for 5" axle beams from 10,000 to 25,000 lbs.
- Heavy duty hangers and equalizers are fabricated from light weight, high strength steel resulting in a lighter more durable trailer suspension.
- Provides the ability for axle alignment through the adjustable trailing arms.
- Extended life equalizer bushing leads to lower maintenance time and cost.
- Approved for single, tandem and triple axle applications.
- Axles using this suspension system can be configured with the spring attached.

**Ordering Information:**

- For a tandem axle set, you must order one front and one rear axle. For a triple axle set, you must order one front and two rear axles. These must be assembled with the short hook of the double slipper spring facing forward on the front axle and facing back on the center and/or rear axle (see spring diagram below).
- Pages 2 and 3 of this bulletin highlight the contents, dimensions, and corresponding kits required for the multiple axle spacing and spring mounting configurations.



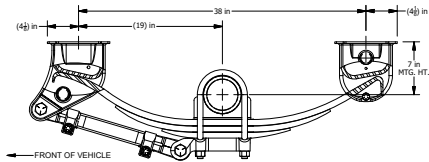
Chip Durren  
Market Manager



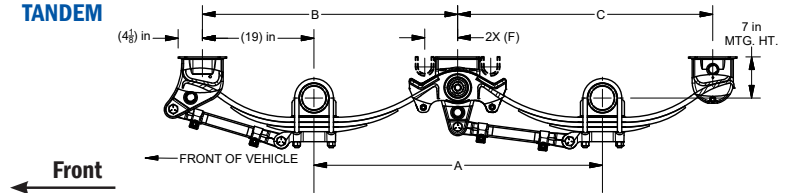
072-048-00	11,250 lbs. capacity each
072-065-00	12,500 lbs. capacity each

## UNDERSLUNG

### SINGLE

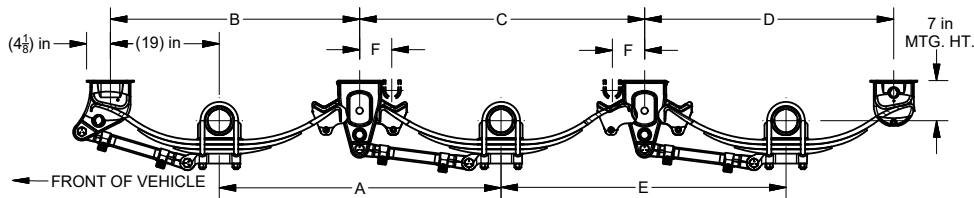


### TANDEM



Axle Spacing	A	B	C	F
49 in	49 3/16 in	43 1/2 in	43 1/2 in	N/A
54 in	54 7/32 in	46 1/32 in	46 7/32 in	8 3/8 in
60 in	60 7/32 in	49 1/32 in	49 7/32 in	11 15/32 in

### TRIPLE



Axle Spacing	A	B	C	D	E	F
49 in	49 3/16 in	43 1/2 in	49 3/4 in	43 1/2 in	49 3/4 in	N/A
54 in	54 7/32 in	46 1/32 in	54 3/4 in	46 7/32 in	54 3/4 in	8 3/8 in
60 in	60 7/32 in	49 1/32 in	60 3/4 in	49 7/32 in	60 3/4 in	11 15/32 in

### 10-25K Single Axle Kit Contents

Part No.	Qty	Description
028-082-05	2	Front Hanger
030-075-05	2	Rear Hanger
062-010-10	1	Track Rod Bushed Adj 19.25
062-011-10	1	Track Rod Bushed Fixed 19.25
007-169-00	4	Track Rod Bolt 1-8 x 5.50 UNC
006-278-00	4	Track Rod Locknut 1-8 UNC
033-091-00	2	Keeper Bolt Sleeve
007-294-00	2	Spring Keeper Bolt 5/8-18 x 4.50 UNF
006-126-00	2	Keeper Bolt Locknut 5/8-18 UNF
059-918-00	1	Instruction Sheet

### 10-25K Multi Axle Kit Contents

Part No.	Qty	Description	Axle Spacing
029-044-10	2	Center Hanger and EQ Assembly HAP-261-01	49"
062-010-10	1	Track Rod Bushed Adj 19.25	49"
062-011-10	1	Track Rod Bushed Fixed 19.25	49"
029-049-10	2	Center Hanger and EQ Assembly HAP-162-01	54"
062-010-54	1	Track Rod Bushed Adj 21.75	54"
062-011-54	1	Track Rod Bushed Fixed 21.75	54"
029-049-20	2	Center Hanger and EQ Assembly HAP-163-01	60"
062-010-60	1	Track Rod Bushed Fixed 24.75	60"
062-011-60	1	Track Rod Bushed Fixed 24.75	60"
007-169-00	4	Track Rod Bolt 1-8 x 5.50 UNC	-
006-278-00	4	Track Rod Locknut 1-8 UNC	-
033-091-00	4	Keeper Bolt Sleeve	-
007-294-00	4	Spring Keeper Bolt 5/8-18 x 4.50 UNF	-
006-126-00	4	Keeper Bolt Locknut 5/8-18 UNF	-
059-918-00	1	Instruction Sheet	-

## Suspension Kits

Order appropriate number of HAP kits for a complete suspension

### HDSS Underslung

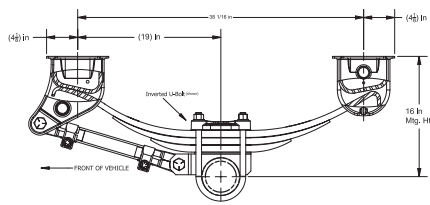
	49"	HAP-161-01	HAP-261-01
Qty for Single	1	n/a	
Qty for Tandem	1	1	
Qty for Triple	1	2	
	54"	HAP-161-01	HAP-162-01
Qty for Single	1	n/a	
Qty for Tandem	1	1	
Qty for Triple	1	2	
	60"	HAP-161-01	HAP-163-01
Qty for Single	1	n/a	
Qty for Tandem	1	1	
Qty for Triple	1	2	

### OPTIONAL KITS - Per Axle

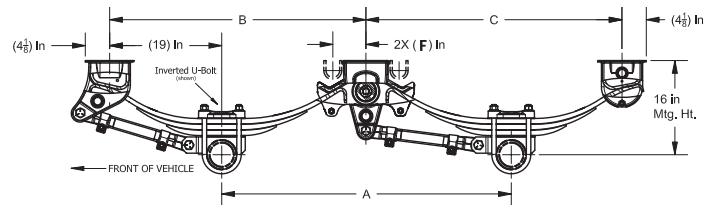
HAP-166-00 Bump Stops (One Pair)

## OVERSLUNG

### SINGLE

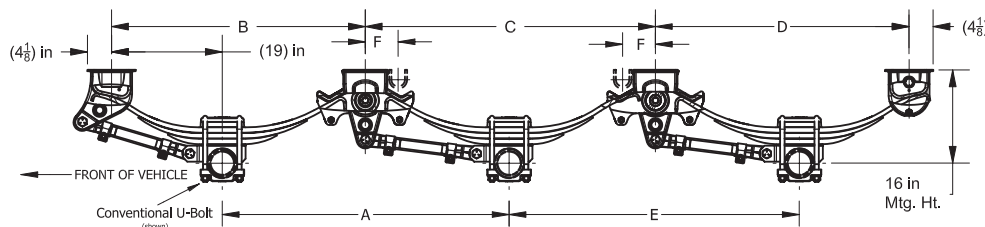


### TANDEM



Axle Spacing	A	B	C	F
49 in	49 in	43 1/2 in	43 1/2 in	5 5/8 in
54 in	54 3/16 in	46 1/16 in	46 in	8 3/8 in
60 in	60 3/16 in	49 1/16 in	49 in	11 7/16 in

### TRIPLE



Axle Spacing	A	B	C	D	E	F
49 in	49 3/16 in	43 1/2 in	49 3/4 in	43 1/2 in	49 3/4 in	5 5/8 in
54 in	54 3/16 in	46 1/16 in	54 3/4 in	46 in	54 3/4 in	8 3/8 in
60 in	60 3/16 in	49 1/16 in	60 3/4 in	49 in	60 3/4 in	11 7/16 in

### 10-25K Single Axle Kit Contents

Part No.	Qty	Description
028-082-05	2	Front Hanger
030-075-05	2	Rear Hanger
062-010-10	1	Track Rod Bushed Adj 19.25
062-011-10	1	Track Rod Bushed Fixed 19.25
007-169-00	4	Track Rod Bolt 1-8 x 5.50 UNC
006-278-00	4	Track Rod Locknut 1-8 UNC
033-091-00	2	Keeper Bolt Sleeve
007-294-00	2	Spring Keeper Bolt 5/8-18 x 4.50 UNF
006-126-00	2	Keeper Bolt Locknut 5/8-18 UNF
059-918-00	1	Instruction Sheet

### 10-25K Multi Axle Kit Contents

Part No.	Qty	Description	Axle Spacing
029-044-10	2	Center Hanger and EQ Assembly HAP-261-01	49"
062-010-10	1	Track Rod Bushed Adj 19.25	49"
062-011-10	1	Track Rod Bushed Adj 19.25	49"
029-049-10	2	Center Hanger and EQ Assembly HAP-162-01	54"
062-010-54	1	Track Rod Bushed Adj 21.75	54"
062-011-54	1	Track Rod Bushed Adj 21.75	54"
029-049-20	2	Center Hanger and EQ Assembly HAP-163-01	60"
062-010-60	1	Track Rod Bushed Fixed 24.75	60"
062-011-60	1	Track Rod Bushed Fixed 24.75	60"
007-169-00	4	Track Rod Bolt 1-8 x 5.50 UNC	-
006-278-00	4	Track Rod Locknut 1-8 UNC	-
033-091-00	4	Keeper Bolt Sleeve	-
007-294-00	4	Spring Keeper Bolt 5/8-18 x 4.50 UNF	-
006-126-00	4	Keeper Bolt Locknut 5/8-18 UNF	-
059-918-00	1	Instruction Sheet	-

### Suspension Kits

Order appropriate number of HAP kits for a complete suspension

#### HDSS Overslung

	HAP-161-01	HAP-261-01
<b>49"</b>		
Qty for Single	1	n/a
Qty for Tandem	1	1
Qty for Triple	1	2
<b>54"</b>		
Qty for Single	1	n/a
Qty for Tandem	1	1
Qty for Triple	1	2
<b>60"</b>		
Qty for Single	1	n/a
Qty for Tandem	1	1
Qty for Triple	1	2

#### OPTIONAL KITS - Per Axle

HAP-164-01 Attaching Parts Kit - Inverted U-Bolts (Spring Seats, Tie Plates, and Attaching Hardware)
HAP-165-01 Attaching Parts Kit - Conventional U-Bolts (Spring Seats, Tie Plates, and Attaching Hardware)
HAP-166-00 Bump Stops (One Pair)