



Date: April 8, 2020

## Subject: #10L OBSOLESCENCE

Dexter has made the decision to discontinue the #10L due to low market demand. While axle production of the #10L is no longer running, service parts will continue to be available.

Introduced in 2009, both the D30 sprung axle and #10L Torflex® axle were developed to service a market need for lighter weight axles with a 3,000 lb. capacity rating. The light weight design was accomplished with a unique CSA certified 10" x 1-1/2" electric brake and matching hub-drum. Although production of the #10L is discontinued, the D30 production will continue on, as well as the shared components.

Customers seeking replacement parts for the #10L should see the parts break downs shown on pages 2 and 3 of this bulletin. Please use caution when repairing the 10" x 1-1/2" brake, as components and assemblies should be replaced with like components and not substituted with similar looking 10" x 2-1/4" components. Doing so may cause performance related issues or potential failure.

The #10L utilized the same beam design and components as the #10, so all the same axle mounting brackets, overhang and start angles are available for replacement. (See overhang table below.) Please use the axle label (PB#401) or etched axle lot number (PB#350) as quality sources of information when seeking a replacement axle.

Axle Model	Minimum Overhang	Maximum Overhang
#10L	12.60"	23.60"
#10	12.60"	23.60"

Customers seeking to replace a #10L axle beam will need to replace the complete assembly with a new #10 Torflex axle. The brakes and hub drums from the #10L are unique and are not transferable between products. If exchanging out a single axle on a tandem axle unit, both axles are not required to be exchanged as long as the new #10 is built with an identical rubber capacity.

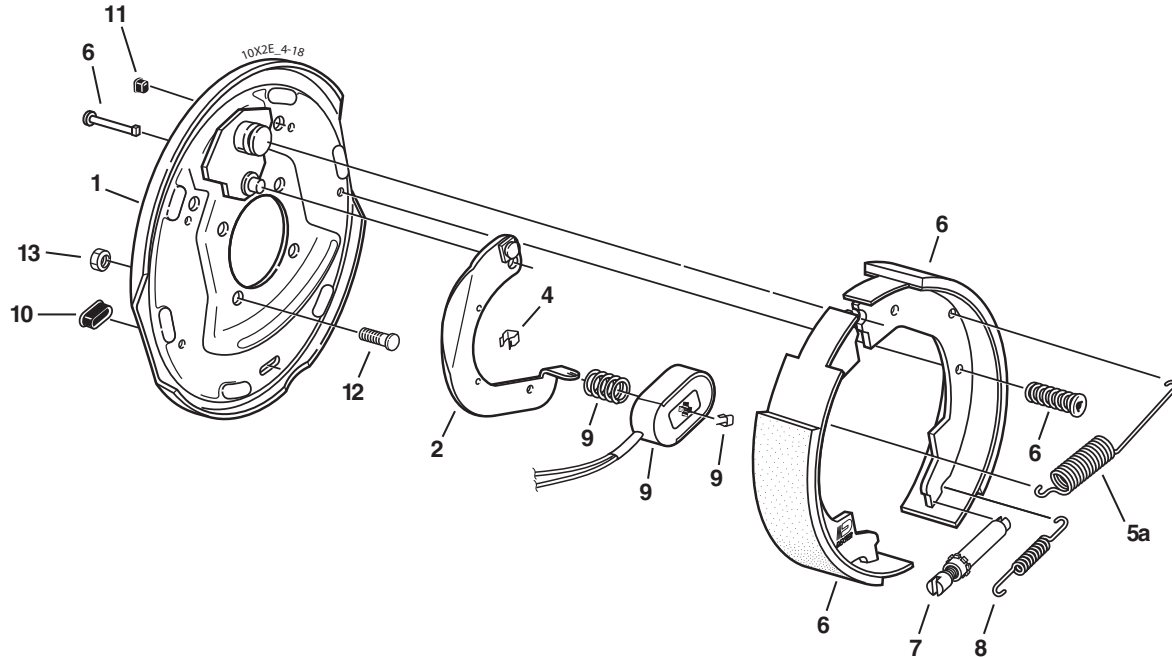
Please refer to Dexter's Light Duty Catalog (LIT-122-00) for parts breakdowns to identify the kits and components needed.

Please contact your Dexter account manager for additional information and further assistance.

Mark Nave  
Market Manager

## 10" x 1-1/2" Electric Brake

CSA approved at 3000 lbs. / 13.1 SLR

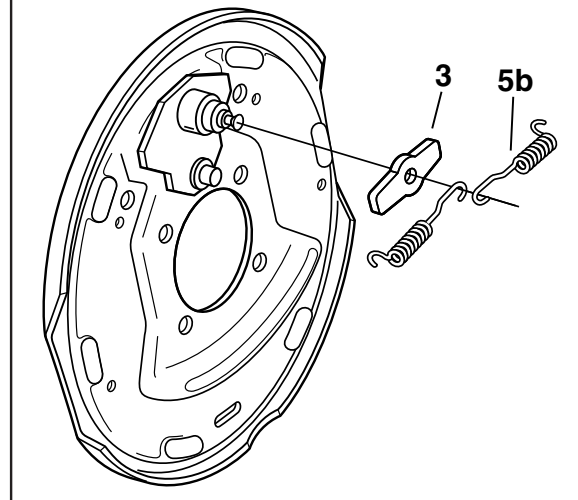


### Electric Brake 3000 lbs.

Item	Part No.	Qty/Brk	Description
0	K23-472-00	1	LH Complete Brake Assembly (shown)
0	K23-473-00	1	RH Complete Brake Assembly
1	036-134-03	1	Backing Plate Assembly
2	047-019-05	1	LH Actuating Lever Arm
2	047-020-05	1	RH Actuating Lever Arm
3	005-067-00	1	Washer (before 3/18)
4	027-005-00	2	Wire Clip
5a	046-056-00	1	Retractor Spring (after 3/18)
5b	046-009-00	2	Retractor Spring (before 3/18)
6	K71-046-00	1	Shoe & Lining Kit Contains:
	035-001-00	2	Shoe Hold Down Cup
	1 040-129-00	1	Primary Shoe & Lining
	040-130-00		Secondary Shoe & Lining
	2 046-006-00	2	Shoe Hold Down Spring
	049-009-00		Shoe Hold Down Pin *T*
7	043-004-00	1	Adjuster Assembly
8	046-018-00	1	Adjusting Screw Spring
9	K71-104-00	1	Magnet Kit Contains:
	042-140-00	1	Magnet (green wire)
	1 027-009-00		Magnet Clip
	1 046-080-00		Magnet Spring (before 7/16)
	1 046-175-00		Magnet Spring (after 7/16)
10	046-007-00	2	Adjuster Slot Plug
11	046-016-00	1	Wire Grommet
12	007-041-00	4	Brake Mounting Bolt - Press-in
*13	006-017-00	4	Brake Mounting Nut

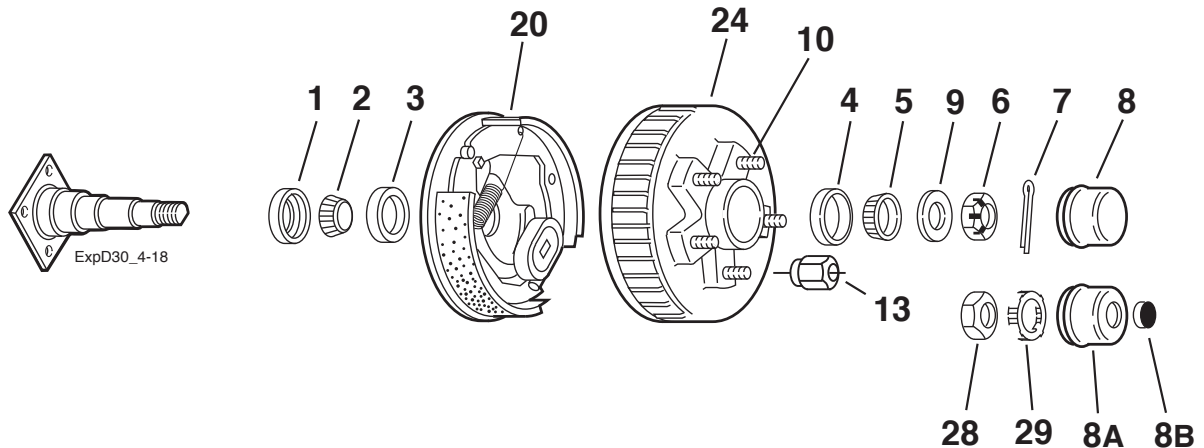
\* Not included with complete brake assembly. Item sold separately.

### Before 3/18: Dual Retractor Spring Components



## 545 Hub Group - For D30/ #10L

### Service Parts Only



#### Grease Lube Parts

Item	Part No.	Description
1	010-019-00	Grease Seal for E-Z Lube®
2	031-032-02	LM67048 Inner Bearing Cone
3	031-032-01	LM67010 Inner Bearing Cup
4	031-031-01	L44610 Outer Bearing Cup
5	031-031-02	L44649 Outer Bearing Cone
6	006-176-00	Spindle Nut
7	019-002-00	Cotter Pin
8	021-003-00	Grease Cap
8A	021-041-01	Grease Cap for E-Z Lube®
8B	085-001-00	Rubber Plug for E-Z Lube®
9	005-023-00	Spindle Washer
28	006-191-00	Special Jam Nut for E-Z Lube® (after 2002)
29	006-190-00	Spindle Nut Retainer for E-Z Lube® (after 2002)

#### 10" x 1-1/2" Brakes

Item	Part No.	Description
20	K23-472-00/K23-473-00	LH/RH Electric
20	K23-476-00/K23-477-00	LH/RH Nev-R-Adjust®

Note: Spindle is not available for resale.

#### Hubs

Item	Part No.	Description	Bolt Circle
<b>Hubs and Drums</b>			
24	008-418-02	1/2" Stud	5 on 4.50

#### Studs & Wheel Nuts

Item	Part No.	Description
10	007-185-00	1/2-20 Pressed Wheel Stud
13	006-080-00	1/2-20 60° Cone Nut