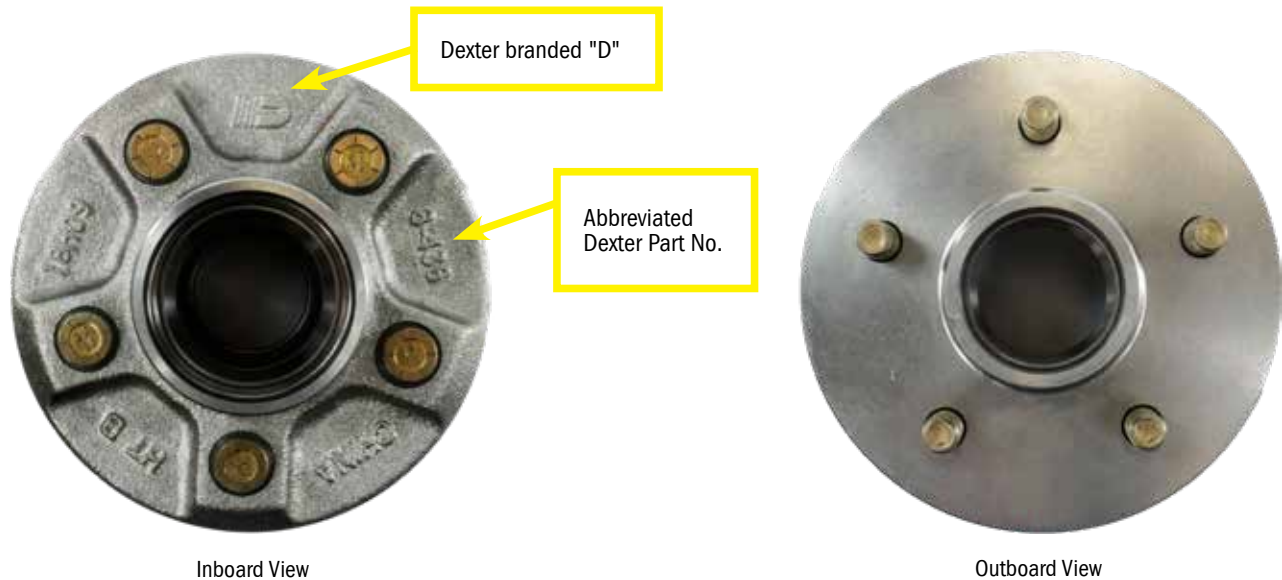


Date: April 29, 2021

Subject: 008-436-04 GAL-DEX® Idler Hub is Replacing the 008-248-50 Idler Hub

Dexter will be making a running change regarding the GAL-DEX idler hub to a zinc based coating that **surpasses 500 hours of salt spray** testing per the ASTM B117 standard. There will also be a change in the casting design to a round face versus the existing 5-spoke design. As a result, Dexter is discontinuing the 008-248-50 idler hub and will be offering the 008-436-04 GAL-DEX idler hub in its place for most applications. This product bulletin will address situations when replacing the 008-248-50 with the 008-436-04 idler hub on existing axles in the field.

PHOTOS OF 008-436-XX SERIES GAL-DEX HUBS**New Axles**

On new axle production, the GAL-DEX option will be using a round idler GAL-DEX hub instead of the five-spoke GAL-DEX hub on D35 and #10 axle models when the GAL-DEX option is chosen. Due to a 3/16" hub face offset difference between the old 008-248-50 hub and the 008-436-04 GAL-DEX hub, pre-configured axles will require a new pre-configuration number to be created and the old configuration numbers will no longer be available. Dexter's sales team will be coordinating with customers to migrate to new pre-configurations to utilize.

Replacement Axles

When ordering replacement axles, specify the GAL-DEX option to maintain the axle hub face and use the 008-436-04 GAL-DEX hub.

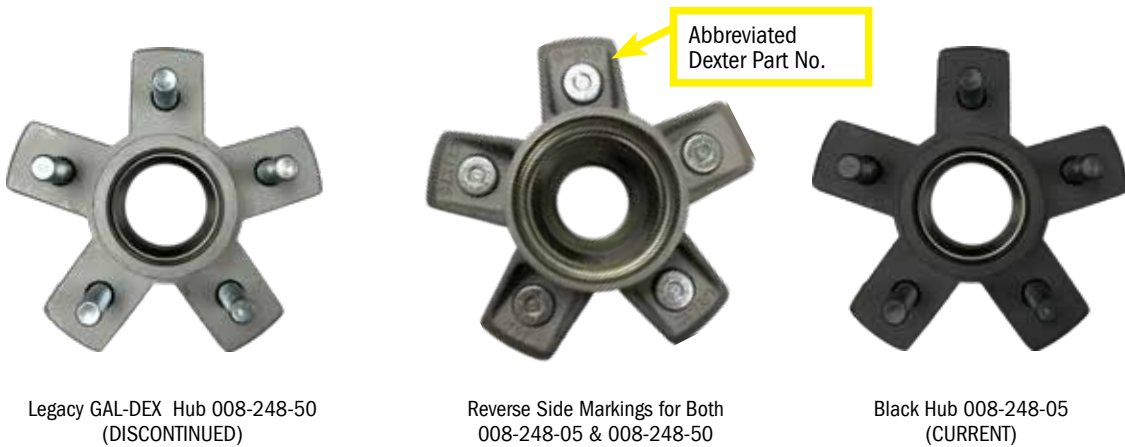
Replacement Hubs

Please note that there is a 3/16" difference in hub face offsets between these two hubs. The new GAL-DEX hub is inset compared to the legacy Dexter 5-spoke hub. In a service replacement situation, verify that there is enough clearance between the tire and the frame/fender. In situations where the tire to side of frame/fender clearance is less than 1-1/2", the black version of the Dexter 5-spoke hub should be used.

Parts List

OLD DEXTER PART NUMBER	OLD DESCRIPTION	NEW DEXTER PART NUMBER	NEW DESCRIPTION
008-248-50	Hub, 3.5K, GAL-DEX, 5-Spoke Hub Face	008-436-04	Hub, 3.5K-3.7K, GAL-DEX Round Hub Face
008-248-50	Hub, 3.5K, GAL-DEX, 5-Spoke Hub Face	008-248-05	Hub, 3.5K, Black, 5-Spoke Hub Face

*NOTE: Verify wheel and tire spacing with fender and frame to ensure no interference issues.
Offset difference between the 5-spoke hub and round hub is 3/16" per hub, 3/8" per axle.



Please contact your Dexter account or product manager for additional information or for further assistance.



Jay Klinkerman
 Market Manager