

Date: February 14, 2022

## Subject: 12" x 2" and 10" x 2-1/4" Wheel Stud Identification

Due to large increases in volume since July of 2020, Dexter has on occasion substituted 10" x 2-1/4" hubs and hub-drums and 12" x 2" hub-drums with non-Dexter product on axles only. Production axles supplied with non-Dexter hubs or hub-drums will receive the same support and warranty as all Dexter product.

The substituted 10" x 2-1/4" hub and hub-drums and 12" x 2" hub-drums utilize a different wheel stud than used on standard Dexter product. Field service repairs will need to be managed with wheel studs specific to the non-Dexter hubs and hub-drums. Please use the table and pictures below to properly identify the hub and hub-drum, as well as wheel stud dimensions.

PART NUMBERS	DESCRIPTION
008-259-05	Hub 2.2K 545 5.50" DIA. Hub Face Cups & Studs
008-248-05	Hub 3.5K 545 Cups & Studs
008-247-05	Hub-Drum 3.5K 545 Cups & Studs
008-249-07	Hub-Drum 3.5K 550 Cups & Studs

Inspect hub or hub-drum for cast in manufacturer identification or use wheel stud dimension table to determine proper replacement wheel stud.



Inspect hub or hub-drum for cast in manufacturer identification or use wheel stud dimension table to determine proper replacement wheel stud. If casting can be identified with Dexter or a Dexter logo, please disregard this bulletin and proceed to review in Dexter's [Light Duty Catalog \(LIT-122-00\)](#).

MANUFACTURER ID	REPLACEMENT WHEEL STUD KIT	DESCRIPTION
IME	K71-991-00	Press-In Wheel Stud IME 1/2-20 UNF Thread 007-484-00 (QTY 5)
RTK	K71-993-00	Press-In Wheel Stud RTK 1/2-20 UNF Thread 007-122-01 (QTY 5)

## Subject: 12" x 2" and 10" x 2-1/4" Wheel Stud Identification

Part number of hub-drum for 7,000 lb. rated axles using non-Dexter product.

PART NUMBERS	DESCRIPTION
008-219-13	Hub-Drum 7K 865 9/16" Grease Cups & Studs

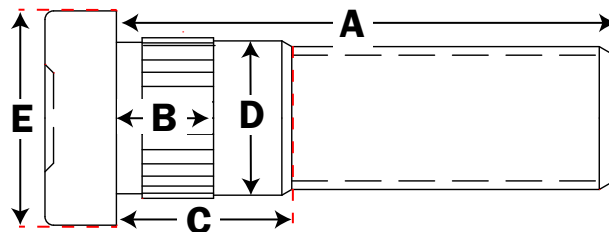
Inspect hub-drum for cast in manufacturer identification or use wheel stud dimension table to determine proper replacement wheel stud.



Inspect hub or hub-drum casting for manufacturer identification or use wheel stud dimension table to determine proper replacement wheel stud. If casting can be identified with Dexter or a Dexter logo, please disregard this bulletin and proceed to review in Dexter's [Light Duty Catalog \(LIT-122-00\)](#).

MANUFACTURER ID	REPLACEMENT WHEEL STUD KIT	DESCRIPTION
IME	K71-992-00	Press-In Wheel Stud IME 9/16-18 UNF Thread 007-483-00 (QTY 8)
RTK	K71-994-00	Press-In Wheel Stud RTK 9/16-18 UNF Thread 007-482-00 (QTY 8)

If the manufacturer information cannot be found on casting, please use the dimension chart to ensure the proper wheel stud is being selected.



Inspect hub or hub-drum casting for manufacturer identification or use wheel stud dimension table to determine proper replacement wheel stud. If casting can be identified with Dexter or a Dexter logo, please disregard this bulletin and proceed to review in Dexter's [Light Duty Catalog \(LIT-122-00\)](#).

KIT P/N	P/N	THREAD SIZE	A	B	C	D	E
K71-993-00	007-122-01	1/2-20 UNF-2A	1.99"	.39"	.80"	.5905"	.77"
K71-991-00	007-484-00	1/2-20 UNF-2A	1.825"	.44"	.58"	.5175"	.68"
K71-994-00	007-482-00	9/16-18 UNF-2A	1.96"	.43"	.67"	.598"	.77"
K71-992-00	007-483-00	9/16-18 UNF-2A	2.49"	.46"	1.06"	.600"	.81"

Note: Wheel studs should only be ordered by the kit number.



**Subject: 12" x 2" and 10" x 2-1/4" Wheel Stud Identification**

CAUTION: Accurate wheel stud selection is important to ensure proper wheel attachment and avoidance of damage to the hub or hub-drum. Please confirm manufacturer identification or wheel stud measurements correlate to this bulletin or Dexter literature before installation.

Dexter axles utilizing non-Dexter hub and hub-drums, supplied from Dexter, will receive the same support and warranty as offered to all Dexter axles.

Please contact your Dexter account manager for additional information and further assistance.

A handwritten signature in black ink that reads 'Mark Nave'.

Mark Nave  
Product Manager