



PRODUCT BULLETIN #489

DEXTER FORTRESS™ BOLT-ON OIL CAP AFTERMARKET KIT

January 4, 2024

Dexter is pleased to introduce the release of the new Fortress Bolt-On Oil Cap Kit (K21-259-00). The new aftermarket kit supports Dexter's conversion of 9,000 - 12,000 lbs. production axles to the Fortress Bolt-On caps. The Bolt-on product line was originally released as part of [product bulletin 483](#).

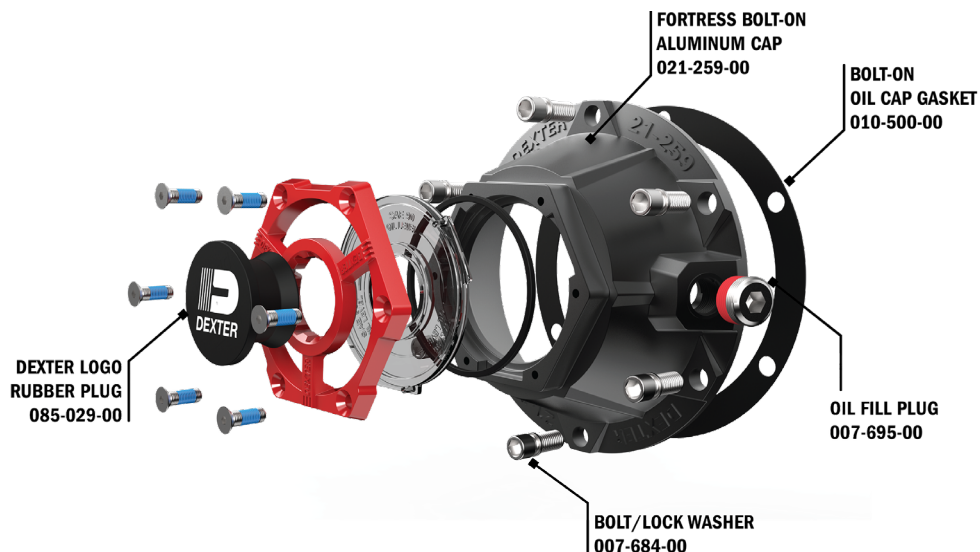


K21-259-00 KIT CONTENTS:

PART NUMBER	QTY	DESCRIPTION
021-259-00	1	Fortress Bolt-On Aluminum Cap
010-500-00	1	Bolt-On Oil Cap Gasket
007-684-00	6	Bolt / Lock Washer
007-695-00	1	Oil Fill Plug
085-029-00	1	Dexter Logo Rubber Plug

The Bolt-On aftermarket kit includes an insert card with a QR code link to a Dexter Fortress web page, where customers can find additional product information and installation instructions.

The image below represents an exploded rendering of a complete Bolt-On cap:



Please reference the chart below for capacity and axle models specific to the Bolt-On cap:

AXLE CAPACITY	CAP STYLE	AXLE MODELS
9,000 - 12,000 LBS.	BOLT-ON	#13G, #13D, #14, #14T, D90, D100G, D100, D120

To accommodate the new Bolt-On cap, Dexter has re-designed the 9,000 - 12,000 lbs. hub series; please note the aftermarket bolt-on caps are NOT retrofittable to the existing legacy thread-in hubs and will ONLY fit Dexter hubs with the bolt-on design.

The chart below represents the NEW hub P/Ns that will accept the Fortress Bolt-On cap:

BOLT-ON HUB #	THREAD-IN HUB #	NEW HUB PART DESCRIPTION
008-288-13	008-288-03	9K-10K GD HUB, 8 ON 6.5", CUPPED & STUDDERED, BOLT-ON CAP
008-288-15	008-288-05	9K-10K GD HUB & DRUM, 8 ON 6.5", CUPPED & STUDDERED, BOLT-ON CAP
008-288-16	008-288-06	9K-10K GD HUB, 8 ON 6.5", CUPPED & STUDDERED, ABS, BOLT-ON CAP
008-288-17	008-288-07	9K-10K GD HUB, 8 ON 6.5" CUPPED & STUDDERED, ROTOR, BOLT-ON CAP
008-288-18	008-288-08	9K-10K GD HUB & ROTOR, 8 ON 6.5", CUPPED & STUDDERED, ROTOR, BOLT-ON CAP
008-430-13	008-430-03	10K GD HUB, CUPPED & STUDDERED, BOLT-ON CAP
008-430-15	008-430-05	10K GD HUB & DRUM, CUPPED & STUDDERED, BOLT-ON CAP
008-430-17	008-430-07	10K GD HUB & DRUM, CUPPED & STUDDERED, ABS, BOLT-ON CAP
008-214-22	008-214-02	10K HD HUB & DRUM, 8 ON 6.5", CUPPED & STUDDERED, BOLT-ON CAP
008-214-25	008-214-05	10K HD HUB, 8 ON 6.5", CUPPED & STUDDERED, BOLT-ON CAP
008-214-26	008-214-06	10K HD HUB, 8 ON 6.5", CUPPED & STUDDERED, HI-PROFILE, ROTOR, BOLT-ON CAP
008-214-31	008-214-11	10K HD HUB & ROTOR, 8 ON 6.5", CUPPED & STUDDERED, BOLT-ON CAP
008-214-35	008-214-15	10K HD HUB & DRUM, 8 ON 6.5", CUPPED & STUDDERED, HI-PROFILE, ABS, BOLT-ON CAP
008-214-37	008-214-17	10K HD HUB & ROTOR, 8 ON 6.5", CUPPED & STUDDERED, ABS, WITH BOLT-ON CAP
008-214-28	008-214-08	12K HUB, 8 on 6.5", CUPPED & STUDDERED, HI-PROFILE, BOLT-ON CAP
008-214-29	008-214-09	12K HUB & DRUM, 8 ON 6.5" CUPPED & STUDDERED, HI-PROFILE, BOLT-ON CAP
008-214-30	008-214-10	12K HUB, 8 ON 6.5", CUPPED & STUDDERED, HI-PROFILE, ROTOR, BOLT-ON CAP
008-214-32	008-214-12	12K HUB & ROTOR, 8 ON 6.5" CUPPED & STUDDERED, HI-PROFILE, BOLT-ON CAP
008-214-36	008-214-16	12K HUB & DRUM, 8 ON 6.5", HI-PROFILE, ABS, BOLT-ON CAP
008-214-38	008-214-18	12K HD HUB & ROTOR, 8 ON 6.5" CUPPED & STUDDERED, ABS, BOLT-ON CAP
008-422-13	008-422-03	12K HUB, CUPPED & STUDDERED, BOLT-ON CAP
008-422-14	008-422-04	12K HUB, CUPPED & STUDDERED, ROTOR, BOLT-ON CAP
008-422-15	008-422-05	12K HUB & DRUM, CUPPED & STUDDERED, BOLT-ON CAP
008-422-16	008-422-06	12K HUB & ROTOR, CUPPED & STUDDERED, BOLT-ON CAP

For questions or additional information, please visit www.dexteraxle.com/fortress or contact your Dexter Account Manager.



Matt Brady
Product Manager